

# IEMSA VOICE

A VOICE FOR POSITIVE CHANGE IN IOWA EMS

## IEMSA 33<sup>RD</sup> ANNUAL CONFERENCE & TRADE SHOW

IOWA EVENTS CENTER • DES MOINES, IA • NOVEMBER 9-11, 2023

# REGISTER TODAY!

### INSIDE THIS ISSUE

#### NEW! IEMSA VOICE PODCAST

#### FULL-DAY PRE-CONFERENCE WORKSHOPS THURSDAY 11/9

- > SKILLS RODEO : Hands-On Skills Challenge Workshop
- > Critical Care Workshop
- > Honor Guard Workshop—**FREE**

#### 1/2 DAY PRE-CONFERENCE WORKSHOPS THURSDAY 11/9

- > Frontline Providers Mental Health Workshop
- > Service Director/Medical Director Workshop (Intro + Refresher)
- > "A Little Bit of This + That" Workshop
- > Emergency Response to Complex Outdoor Incidents + Hunting Emergencies Workshop

#### > BREAK-OUT SESSION TRACKS

FRIDAY 11/10 + SATURDAY 11/11

- > BLS Track
- > ALS Track
- > Pediatric Track
- > Hard-to-Find Track

### REGISTRATION FORM + FULL COURSE DESCRIPTIONS



# WE'LL SEE YOU THERE!

Our LifeFlight team is thrilled to announce our participation in the upcoming IEMSA conference from November 9th to 11th.

## YOUR SCENE TEAM

UnityPoint Health LifeFlight specializes in adult, pediatric and neonatal critical care and scene response.



## DISPATCH 1-800-TRAUMA



# > CONTENTS

The VOICE is published quarterly by the Iowa EMS Association covering state EMS issues for emergency medical services professionals serving in every capacity across Iowa. Also available to members online.



## 7 PRESIDENTIAL EDITORIAL : Eye on the Future



## 25 IEMSA OPENS REGISTRATION FOR THE 33<sup>RD</sup> ANNUAL IEMSA CONFERENCE + TRADE SHOW : NOVEMBER 9-11, 2023

OUR PURPOSE : To provide a voice and promote the highest quality and standards of Iowa's Emergency Medical Services.

## > BOARD OF DIRECTORS

- > President : Andy Ney
- > Vice President : Tom Summitt
- > Secretary : Tracy Foltz
- > Treasurer : Chuck Gipson
- > Immediate Past President : Mark Sachen

- > Northwest Region :  
Mary Chwirka, Tracy Foltz, John Hansen
- > Southwest Region :  
Michael Kirsch, Sandra McIntyre, Sarah Solt
- > North Central Region :  
Spencer Armstrong, Carl Ginapp,  
Mark Sachen
- > South Central Region  
Mark McCulloch, Katy Thornton,  
Jana Trede
- > Northeast Region :  
Chris Dahlstrom, Andy Ney,  
Nicholas Jellison
- > Southeast Region :  
William Cline, Chuck Gipson,  
Thomas Summitt
- > At-Large : Dawn Brus,  
Jon Dunham, Jerry Ewers
- > Education :  
Johnathan Cockrell, Jamie Temple
- > Medical Director : Christopher Hill, D.O.
- > Lobbyists : Eric Goranson
- > GEMT Consultant : Karla Fultz McHenry

## > BOARD MEETINGS

- > October 19, 2023  
Zoom Meeting - 1:00—3:00pm
- > December 21, 2023  
Zoom Meeting - 1:00—3:00pm

## > IEMSA OFFICE

5550 Wild Rose Ln. , Suite 400  
West Des Moines, IA 50266  
515.225.8079 • fax: (877) 478-0926  
email: administration@iemsa.net  
Office Manager: Lisa Cota Arndt

## > CALENDAR OF EVENTS

- > 33<sup>rd</sup> Annual Conference & Trade Show  
November 9-11, 2023  
Iowa Event Center - DSM
- > EMS Memorial Ceremony  
May 18, 2024- WDM Station #19
- > 20<sup>th</sup> Annual EMS Billing and  
Documentation Conference  
August 13 + 14, 2024  
Hilton Garden Inn West Des Moines
- > Public Safety Boot Camp  
September 24 + 25, 2025  
Hilton Garden Inn West Des Moines

<a href="#">06</a>	LEGISLATIVE UPDATE : MEDICAID GEMT PAYMENT PROGRAM STUDY GROUP
<a href="#">7</a>	EDITORIAL AN EYE ON THE FUTURE
<a href="#">8</a>	IOWA EMS SERVICE REAUTHORIZATION INSPECTION PROCESS CHANGES
<a href="#">9</a>	A WORD FROM BUREAU CHIEF MCCOMAS
<a href="#">11</a>	RESPONDING TO THE OPIOD CRISIS
<a href="#">12</a>	IEMSA AWARD HONOREES: 2024 IEMSA AWARD NOMINATIONS OPEN
<a href="#">17</a>	PRESIDENT'S ROAD TRIP: NEW IEMSA PODCAST
<a href="#">19</a>	AFFILIATE MEMBERSHIP : FROM A SERVICE DIRECTOR'S STANDPOINT AND WHY THE "BEAN COUNTERS" APPROVE
<a href="#">23</a>	NEW INDIVIDUAL MEMBERSHIP BENEFIT : 4.0 SELF PACED CE'S ONLINE AT CAREERCERT.COM
<a href="#">25</a>	19TH ANNUAL BILLING CONFERENCE SAVE-THE-DATE FOR 2024
<a href="#">26</a>	HONORING OUR OWN CEREMONY: HONOR OUR FALLEN HEROES
<a href="#">27</a>	2022 IEMSA SCHOLARSHIP WINNERS: 2024 APPLICATION IS OPEN
<a href="#">34</a>	33 <sup>RD</sup> ANNUAL CONFERENCE BROCHURE
<a href="#">42</a>	33 <sup>RD</sup> ANNUAL CONFERENCE REGISTRATION FORM

# FELD FIRE™

"We've got you covered."

Ambulances

Quick Attack

Spartan S180



Your equipment specialists, since 1945.

Exclusive regional dealer.



Visit us online at:  
**FeldFire.com**

**YOUR SINGLE SOURCE** APPARATUS / SERVICE / EQUIPMENT

**GRAIN VALLEY** | 1330 NW Jefferson St. • Grain Valley, MO 64029 • P800-568-2403

**ST. LOUIS** | 10403 Baur Blvd., Ste. E • Olivette, MO 63132 • P314-396-9745

**CARROLL** | 113 N. Griffith Rd. • Carroll, IA 51401 • P712-792-3143

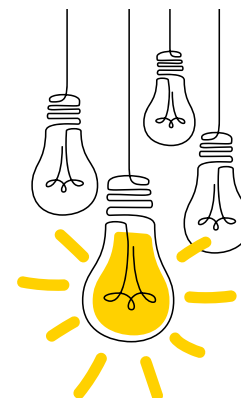


# A LETTER FROM OUR IEMSA PRESIDENT

ANDY NEY, IOWA EMS ASSOCIATION PRESIDENT



## NEXT GENERATION : YOUTHFUL EXUBERANCE



Dear Members, Sponsors, Colleagues, and Future Members,

**I am thrilled to represent you and be a VOICE for you, your agency, your training center, and your community in my new role as President of the Iowa EMS Association!**

This organization has been my favorite to not only participate in as a board member, but also be a member of. We have a lot of exciting things in the works for IEMSA! Healthcare is a team sport. It takes all of us, from first-responder to rehabilitation specialists, to decrease morbidity and mortality from illness and injury in our communities.

### Website | Membership Software –

Community Brands is sunsetting our current membership database on NetFORUM by June 2024, so for this year's "Project" we are working with Community Brands to transition to the more updated system called YourMembership (YM). With this transition, we will also feature a NEW WEBSITE that is linked to the membership system. The cost of the software will remain the same for the current contract. This was a blessing in disguise as we had discussed budgeting \$20,000.00+ to work with a web designer to update our website and social media presence during our budget meeting. Now we should be able to save those funds for a different project! This program will also automate renewal notices on membership deadlines for expiration as well as provide an autorenewal feature. It will also have many more features that will help IEMSA organize, analyze, and report data. We hope to have this website and online conference registration up and running in before June of 2024. With any software change brings its own challenges, please be mindful of this as we integrate with this new platform.

**Podcast** – IEMSA started a PODCAST called, The VOICE for Iowa EMS, and we are dropping new episodes every Monday! We are starting with content that will allow you to get to know each of our board members (more on this in our newsletter)! If you have some time, listen to them on RSS Feed, Apple Podcasts, Google Podcasts, Amazon Music, Spotify, Stitcher, and Pandora!

**Merchandise** – our merchandise committee is looking into setting up an online store for purchasing IEMSA swag! We are vetting Kotis Design, a vendor that we could use to store, sell, and send merch straight to your doorstep! Stay tuned!

### GEMT | Medicaid Supplemental Funding

– IEMSA has contracted with Karla McHenry again as our expert in Iowa Medicaid. As many of you are aware, IEMSA and Karla were instrumental in passing GEMT in Iowa legislation. This program significantly benefits the government-owned EMS agencies in our State involving Medicaid patient transports. Unfortunately, this program does not help the nongovernmental providers, like hospital-based, for-profit and non-profit organizations. EMS continues to face sustainability challenges involving money, so hopefully after our meeting with Iowa Medicaid Enterprises, we have an idea of how we can help those affiliate members that so desperately need the financial help.

**Billing & Management Conference** – On August 15th and 16th, IEMSA welcomed Doug Wolfberg from Page, Wolfberg, and Wirth back for our annual Billing and Management Conference at the Hilton Garden Inn in West Des Moines! This conference is one of our most informational conferences and is a great opportunity to grow your network or maybe find a mentor! Save-the-Date for next year's Billing and Documentation Conference— August 13 + 14, 2024

**33<sup>rd</sup> Annual Conference & Tradeshow**—November 9th, 10th, and 11th at the Iowa Convention Center in Des Moines is our largest and most exciting event of the year. During this conference, we have national and local speakers with today's hottest topics in EMS! Registration is open! Check out the details in this publication and get registered today. It is the best place to get continuing education hours for your recerts, but also, the BEST place to network and meet more people that are just like you! In 2022, we hosted 1357, including

attendees, speakers, exhibitors, students, staff, award honorees and Honoring Our Own families, Let's get ready to bump those numbers up!

**Awards** – we will award this year's Award winners on November 11, 2023 at the Annual Conference during the Lunch in the educational hall. Do you know someone who is deserving State recognition as an EMS provider, agency, dispatcher, instructor, physician, or someone who is a LEGEND in Iowa EMS that should be submitted to our Hall of Fame? It's never too early to nominate someone for an IEMSA Award. The Nomination Form can be found on our website for 2024--deadline for nominations is September 1, 2023.

**Scholarships**—Yes, IEMSA has these too! Download the application on the website and submit to [administration@iemsa.net](mailto:administration@iemsa.net). Remember you must be a Student Member (which is FREE to students) and be enrolled into a Training Center that is affiliated with IEMSA. See the list of qualifications and requirements on our website. We have SIX (6) \$1,000.00 scholarships available each year -- one for each IEMSA Region!

**Leadership Conference** – IEMSA held its Leadership Conference at the Hilton Garden Inn in West Des Moines in April and WOW does Jon Politis put on an excellent academy! Thanks to the 30 individuals who attended this event. SAVE-THE-DATE for when we host this Public Safety Boot Camp presented by Jon Politis -- September 24 + 25, 2025 at the WDM Hilton Garden Inn.

*I look forward to seeing you at our events!*



# MEDICAID GEMT PAYMENT PROGRAM STUDY GROUP

KARLA M<sup>C</sup>HENRY, IOWA EMS ASSOCIATION GEMT PROGRAM CONSULTANT



The IEMSA Board has contracted with Karla Fultz McHenry to study the potential expansion of the Ground Emergency Medical Transportation (GEMT) payment program to include those providers of Medicaid emergency medical transportation services that are not eligible under the current State Plan Amendment (SPA.) This includes working with the Iowa Department of Health and Human Services (DHHS) Medicaid Division to explore all options available.

**The Iowa Emergency Medical Services Association (IEMSA) met with DHHS on July 25th, to discuss potential options for expansion of the GEMT program.** As a result of that meeting two options are viable and need analysis: 1) a provider assessment/tax on ALL Medicaid EMS ground services; 2) An increase in EMS rate to the percentage of Medicaid payment as compared to Medicare payment. Iowa is currently at 31% of Medicare. Wisconsin has this year improved its percentage this year to 88% of Medicare for Medicaid payments. Iowa has fallen behind every state in the Midwest for the Medicaid payment percentage rate.

**The IEMSA Board then met to discuss the information we received from DHHS at the July 25 meeting.** As a result of the discussion, DHHS was asked to provide an analysis of a draft provider assessment/tax and the potential financial impact on ground emergency medical service providers. DHHS will be providing a survey tool IEMSA which will be sent to ALL Medicaid enrolled EMS provider agencies for the fiscal information to do this analysis.

**As a Board, we want to ensure there is no impact to the current GEMT program or its providers, therefore, IEMSA needs the information to assess the pros and cons of an assessment/tax.** It is important to note the assessment/tax will be required of ALL Medicaid enrolled ground EMS providers, including non-profits and non-governmental/private owned ambulance services. The information received from all of you will be critical in the Board's recommendation to DHHS/Medicaid. Look for the survey in the coming weeks.

**IEMSA approached DHHS/Medicaid to analyze the percentage of Medicaid payment in Iowa as compared to Medicare.** IEMSA is interested in a reasonable increase to this percentage. But this will require additional state dollars and approval from all stakeholders. DHHS/Medicaid has agreed to provide this analysis in percentage increments. DHHS/Medicaid has agreed to provide incremental percentage increase to Medicare rates.

**The IEMSA Board is grateful for the cooperation and collaboration of DHHS/Medicaid on these important payment issues.** These items are of vital importance to all Iowa EMS Services as we move forward with improving the Medicaid program for ground emergency medical services in Iowa. We will continue to update you as we get further information from DHHS/Medicaid.

6

## LifeMed Safety, Inc.

We sell all brands and models of new & used cardiac monitor/defibrillators, AEDs, infusion pumps, ventilators, and associated accessories and supplies. Including ZOLL, Stryker, Philips, and more...



LifeMed Safety also provides on-site and bench repair services for EMS. We specialize in resuscitation products and patient handling equipment including preventative maintenance and repair services.

Visit us at Booth #76 at the IEMSA Annual Conference --Stop by and ask us about our full line of products and services.



**IEMSA CONFERENCE SPECIAL** for new customers. We will perform an on-site annual preventative maintenance (PM) for any **Stryker Power-PRO XT Cot** for **Only \$450.00.**



ADMINISTRATIVE OFFICE:

6124 E 162nd Ave.  
Brighton, CO 80602-7966



**Christy Soll, BSN, RN, Account Executive - Iowa**  
[christy@lifemedssafety.com](mailto:christy@lifemedssafety.com)  
(319) 330-5595 Cell/Text

(800) 276-0274 | FAX (800) 881-0266



# EDITORIAL AN EYE ON THE FUTURE

ANDY NEY, IOWA EMS ASSOCIATION PRESIDENT



I recall the first time I picked up our paper printed newsletter (The VOICE); it was the Fall 2018, after I was asked by Past-President, Jeff Dumermuth if I would be interested in becoming a board member for IEMSA. I wanted to gain more insight on this organization before committing time and effort or at least telling Jeff, "Yes I am interested." Thus, lead me to the current copy that came in the mail that year.



The first section I read was "A Note from Our President – Identity Crisis." Mark McCulloch was the current IEMSA President, and he shared multiple thoughts and ideas revolving around EMS as an Essential Service. I connected immediately to his message. We all (EMS Providers/Agencies) had a common and shared goal of EMS becoming an essential service in Iowa legislation. In 2021, we achieved this goal. However, we continue to face challenges. If you recall in that note from 2018, Mark McCulloch also pointed out in his message that we will have more work to do to ensure the sustainability and reliability of EMS services; much of that work is involving workforce shortage and challenges with recruitment and retention of EMS Providers.

Gone are the days of posting a "help wanted" sign in front of our stations and expecting to receive multiple applications for one open position. Today in Iowa, EMS agencies of all entity's ownership types (Fire-based, Municipal-based, Hospital-based, Private non-profit, Private for-profit, etc.) are exhausting their hiring lists of potential candidates/applicants during each hiring cycle. What changed? I don't know the actual answer(s), but I would like to touch on what could be a major factor with the money aspect of things. Take a moment and reflect on what Mark said in his message about EMS being a "hard sell,"

"Hey young people, have we got a deal for you!! First, we want you to pay for your education (around 20k after all said and done). After that we will expect you to work a minimum of 56 hours per week, overnights, weekends, holidays, birthdays, anniversaries. And if you don't work extra, like all of us old timers did, we'll think you're lazy. We expect you to perform flawlessly day or night, in incredibly challenging – and sometimes hopeless situations.... While everyone watches, criticizes, and disrespects you from the comfort of their armchairs. You will be subject to one of the most dangerous jobs, with an injury rate around 3 times that of the national average for all occupations, and a fatality rate of 7.0 per 100,000 FTEs, while the average of all workers is 4.0, and firefighters 6.1. You will be more likely to get divorced, and around 10 times more likely to contemplate or attempt suicide than the average person. If you decide to make

this your career, according to the Bureau of Labor and Statistics, you can plan on making around \$16/hour. Or course if you volunteer you can expect less pay."

Now when we asked for EMS to become an Essential Service, we were asking for money. In this statement of Mark's, you can see that money is only a part of the concern. Since the COVID Pandemic, many agencies have been able to increase wages or offer sign-on or retention bonuses; however, this doesn't help EMS be sustainable or dependable. We can ask for tax/subsidy increases, but when does that end? I wholeheartedly believe one of our major inadequacies in EMS is the current reimbursement structure for professional services rendered to patients. The main type of payors we see for EMS are Medicare, Medicaid, and Commercial Insurers.

"HEY  
YOUNG PEOPLE,  
HAVE WE GOT  
A DEAL  
FOR YOU!"

At the local level, IEMSA has been successful in advocating for payment reform. One of our most significant "wins" had been the implementation of GEMT for government-owned EMS agencies. It was a great milestone for many of our affiliate members. This initiative provides supplemental reimbursement for Medicaid patients. There is a lot of transparency in this program where the participating agencies must submit cost reports to the State to express how inadequate Medicaid reimbursement is for EMS transport services. Within this program, there continues to be review and suggestions for improvement, and we have a legislative committee that is working with its program stakeholders to continue to make it better.

At the federal level, CMS (Medicare) has implemented other programs like (1) Ground Ambulance Data Collection System (GADCA) to provide information on costs, revenue, utilization, and other information

within an EMS agency during a fiscal year; (2) Emergency Triage, Treat, and Transport (ET3) a voluntary initiative to test two new ambulance payment models – continue to monitor the fee for transport services, assess the model of transporting patients to alternative destinations (Not an Emergency Department), and also providing medical services without transporting patients (think telehealth or "treat-in-place, without transport."), and (3) an Advisory Committee on Ground Ambulance and Patient Billing (GAPB) for the purpose of reviewing options to improve the disclosure of charges and fees for ground ambulance services, better inform consumers of insurance options for ambulance services, and to protect consumers from balance billing. At a minimum, our federal government has recognized the inadequacy of the Ambulance Fee Schedule payment/reimbursement platform. Our hope is that we can improve payment for the services provided by our EMS practitioners in our communities.

Our other main payor is commercial insurance companies. This type of payor provides different challenges. Insurers have stopped negotiating with ambulance services on rates; sometimes they offer one rate regardless of network status, often set at Medicare or slightly above that rate (which congress has recognized as inadequate), and many small services must accept the rates or risk not making payroll or paying bills. A recent analysis found that 85% of emergency claims were Out-of-Network which then relies on the patient to pay. Nationally, 3 million privately insured people are transported by ambulance to emergency rooms annually and 51% are exposed to a potential surprise bill. We at IEMSA are working with one insurance company to explain our local challenges with rising costs and sustainability issues of Iowa EMS Systems. Our goal is to be transparent and hope to see an increase in ambulance payments. Afterall, for those of us who pay for health insurance, when was the last time we did not see our premiums increase?

Well, that was a long message on what I think part of the money problem is with our industry, the payment system. Obviously, there is much more to investigate with current workforce struggles, but one step at a time.

# IOWA EMS SERVICE REAUTHORIZATION INSPECTION PROCESS CHANGES



STEVE VANNATTA, IDHHS/BEMTS : EMS FIELD COORDINATOR



AS ALL OF US IN EMS ARE AWARE, COVID-19 HAS PRESENTED MANY CHALLENGES TO OUR PROFESSION AND CONTINUES TO DO SO.

Much has been learned with regard to treatment and best practices, but early on in the pandemic, it became very apparent that changes would need to be made with regard to the reauthorization inspection process for Iowa's EMS services.

Historically, the Bureau's EMS Field Coordinators completed the inspection process by coming to a service's station, otherwise known as an "onsite" inspection. Much time was spent by the field coordinators traveling across the State every year to visit your stations in order to complete this process. Personally, within the first couple of years of being with the Bureau, I logged over 45,000 miles traveling to visit with all of you.

In late 2019, just prior to "COVID-19" becoming an everyday part of our vocabulary, we started to have discussions and take a closer look at the inspection process, primarily, what could we do to make this process more efficient. Little did we know that just a few months later we would have to devise, test, and implement an online, or "virtual" process, for completing an EMS service inspection. In April 2020 the first "virtual" inspection was completed and this has become the primary means for completing EMS service inspections. The following paragraphs provide guidance for preparation and outline the virtual inspection process to help you better prepare for your virtual inspection.

**Prior to a service's authorization expiring, the individual who is listed as the service director in AMANDA will receive an email from a field coordinator advising them that an inspection needs to be completed for reauthorization.** Because our primary means of communication is by email, it is important that services immediately notify their field coordinator of any changes in service director personnel or contact information. The email sent to the service director will contain a proposed date and time for the inspection, information directing them to the training videos located on our website with regard to maintaining a service's AMANDA account, located here: [https://idph.iowa.gov/BETS/EMS/service\\_programs\\_AMANDA](https://idph.iowa.gov/BETS/EMS/service_programs_AMANDA), a guidance document relating to the technological means to complete the inspection online, and a checklist providing guidance with regard to documents that need to

be uploaded into the service's AMANDA account prior to the online inspection, and the areas within AMANDA that need reviewed for any potential updates.

These documents are also located on our website at <https://idph.iowa.gov/BETS/EMS/application>. The service director will also receive a calendar invite with the proposed date and time, which will also contain the link for the Google Meet for the online portion. If the proposed date and time will not work, please contact the field coordinator to discuss an alternate time.

**The online portion of the inspection process provides the field coordinators with the ability to look at the service's equipment, supplies, and response vehicle(s).** During this time, you will be asked to show the field coordinator these items. Essentially, give us a tour, showing us on camera the equipment and supplies that your service carries along with the inside and outside of your service's response vehicle(s). The field coordinator will ask you any questions they may have surrounding the documents that were uploaded into AMANDA and request that you show them specific equipment and supply items along with their functionality during this time. At the end of the online inspection, the field coordinator will discuss with you any additional things that need to be addressed. A copy of the inspection report will be emailed to the service director and the services medical director shortly thereafter.

**Since the inception of providing the online inspection option, hundreds of services have completed this process and have found it to be a very efficient means of completing their reauthorization.** With that said, we realize that it may not be possible for all services to complete an inspection online due to the rare existence of technological barriers, such as slow internet, and the field coordinators continue to offer onsite inspections as an alternative.

**If you have any questions or need assistance,** please feel free to reach out to either myself or any of the field coordinators. We are always happy to assist you in any way that we can.

Steve Vannatta | 515-443-0911 | [steven.vannatta@idph.iowa.gov](mailto:steven.vannatta@idph.iowa.gov)





## A WORD FROM THE NEWLY APPOINTED BUREAU CHIEF MARGOT M<sup>C</sup>COMAS

CHIEF OF THE BUREAU OF EMERGENCY MEDICAL AND TRAUMA SERVICES (BEMTS)



As I developed my honoree notes, I was struck by the combined years of service for this year's honorees. The eight honorees contributed over 200 years of combined service to our state in EMS. This incredible gift of time humbles and grounds me in this vital work.

My background is in critical care and trauma nursing. I graduated from nursing school at Creighton University in 2009 and worked for Creighton University Medical Center in Omaha until 2017. At that time, I returned to my hometown of Des Moines to work for BETS in the Trauma Nurse Coordinator Role and also worked PRN at Mercy Medical Center in Des Moines in the Neuro-Trauma-Medical ICU. In August 2020, I took on the role of Trauma Program Manager after the departure of Diane Williams. Quality improvement and system development are my passions. Coming from a trauma nurse background, I understand that healthcare is a team sport. It takes all of us, from first-responder to rehabilitation specialists, to decrease morbidity and mortality from illness and injury in our communities.

Healthcare is a dynamic and rapidly changing profession whose challenges were laid bare during the pandemic. I look forward to leading EMS and trauma into this new landscape. It will take all of our voices working collaboratively to meet the challenges we face today and that we will face in the future as we work diligently to secure a robust EMS system for all Iowans. On a personal note, before attending nursing school at Creighton, I graduated from Roosevelt High School here in Des Moines (Go Roughriders!) and the University of Iowa (Go Hawks!). I live in Urbandale with my husband, two elementary-age kiddos, two dogs, and one cat. In my "free time," I am a tri-athlete and had the unique opportunity to participate in the Des Moines IRONMAN 70.3 race in 2021.

I look forward to working with you to secure a robust EMS system for all Iowans.

**100% Employee Owned!**  
**Built in Iowa!**

**LIFE LINE**  
EMERGENCY VEHICLES

NEWTON  
FIRE DEPARTMENT  
PARAMEDIC

**QUALITY SAVES LIVES**

1 Life-Line Drive - Sumner, IA    [www.lifelineambulance.com](http://www.lifelineambulance.com)    800-922-7477





**45**  
**YEARS**  
1978-2023

# YOUR PARTNER IN EMS

- ✓ FIND thousands of emergency products from leading manufacturers
- ✓ SHOP Class II & IV drugs, non-narcotic drugs and other pharmaceuticals
- ✓ CONTROL costs with Inventory Management Solutions
- ✓ GET the best value on the items you use most with Curaplex®
- ✓ SOLVE everyday challenges with pre-assembled Curaplex® Kits
- ✓ REDUCE the administrative burden with Medicare Ground Ambulance Data Collection System Services
- ✓ EARN Free CEUs
- ✓ LEARN how we advocate on your behalf to Congress, FEMA and HHS



**Brooke Hunt**  
Account Manager  
712.308.1092



**Tim Young**  
Account Manager  
614.591.4657

**BOUNDTREE.COM**



**Bound Tree**



# RESPONDING TO THE OPIOID CRISIS



## BETS FIRST RESPONDERS COMPREHENSIVE ADDICTION AND RECOVERY PROGRAM



In 2021, opioid-related deaths rose over 20% from the previous year in Iowa, with similar trends illustrated across the country. Our state's emergency medical personnel play a critical role in responding to the opioid crisis, and naloxone is an essential tool for lowering mortality rates of opioid overdose patients. The First Responders Comprehensive Addiction and Recovery Program (FR-CARP) seeks to recruit additional EMS agencies to participate in the grant. Upon completion of our training program, providers will have access to FREE naloxone supplies and recovery support information.

Since the beginning of program implementation, the Department has provided 1,940 intranasal Narcan® kits and 1,081 doses of IV naloxone to our 201 participating agencies. First responders reported 2,154 encounters for suspected opioid overdose during our last completed grant term, and numbers continue to climb. Naloxone is a safe and effective opioid antagonist, and we believe FR-CARP is a valuable initiative to improve patient outcomes in our state. If your service is interested in participating in our free grant program or would like additional information, please contact Regan Aeschliman [at regan.aeschliman@idph.iowa.gov](mailto:regan.aeschliman@idph.iowa.gov).




### EQUIPMENT SALES



**Rex Crosser**  
(712) 579-6716  
[Rex@danko.net](mailto:Rex@danko.net)



**Monty Boeke**  
(319) 488-6017  
[Monty@danko.net](mailto:Monty@danko.net)



**Chris West**  
(319) 775-1313  
[Chris@danko.net](mailto:Chris@danko.net)







# 2022 IEMSA

# AWARD HONOREES

TOM SUMMITT—IOWA EMS ASSOCIATION VICE-PRESIDENT, AWARDS COMMITTEE CHAIR

Each year IEMSA is honored to recognize Iowa EMS Providers, Services, Dispatchers, Instructors, and Legislators that have shown exceptional dedication and service to their communities. They are nominated and awarded this award by those that hold them in high regard--their peers in EMS. They are both Volunteer and Career providers and in some cases both. It is truly a phenomenal honor to celebrate and recognize these phenomenal Iowans and Iowa Services. We also induct EMS providers into our Hall of Fame every year. These members have dedicated decades of service and time to their community and improving EMS across Iowa in many roles, from volunteer to career, from provider to management/leadership. We also recognize we can not do what we do alone. Therefore, each year we recognize a special "Friend of EMS."

Join us in the CCCU Memorial Building at the IEMSA 33rd Annual Conference + Trade Show -- for our 2023 IEMSA Awards Ceremony Luncheon -- 12:05p-1:05p.

I'm positive you know someone in your community that more than deserves this honor and recognition. Nominations are open for 2024 -- it's never too early to nominate a Provider, Dispatcher, Instructor, Friend of EMS, legislator, EMS Physician or EMS Service (Volunteer and/or Career.) The nomination form is on page 15 in this publication. Nominate someone TODAY.

towards best practice."

**DR. JEFFREY MESSERLY, DO - EMS PHYSICIAN OF THE YEAR** : Dr Messerly has been very active in EMS for Elkader. He is a very strong advocate for EMS and strives to keep EMS crew and equipment up to date out in the field. Finding an EMS Medical Director in rural areas is difficult: let alone one that comes to meetings, trainings, special events and even fund raisers is unheard of. He has gone on several EMS calls when he is not the ER provider. It's that kind of dedication beyond the call of duty that shows the EMS crew that he is deeply committed."

**REBECCA CURTISS - HALL OF FAME** : "She is respected in Iowa through her varied roles as an Emergency Department and Flight Nurse, Director of a County Health Department, and leader at the Iowa Department of Public Health. Rebecca Curtiss came to the Iowa Department of Public Health in 2009, and took on the Bureau Chief Role when the Center for Disaster Operations and Response (CDOR) and EMS Bureaus merged in late 2013. She departed that role in June of this year, and is currently serving as the Bureau Chief of Quality, Innovation, and Medical Policy for Iowa Medicaid.

As the Iowa Department of Public Health Bureau of Emergency and Trauma Services (BETS) Bureau Chief, Rebecca was instrumental in providing leadership through the alignment of EMS, public health preparedness, and hospital preparedness funding that created the regional healthcare coalitions. These coalitions, along with the combined funding structure and requirements to work on system development efforts initiated July 1, 2017.

Following this milestone, Rebecca worked within the bureau to lead efforts to make significant changes in rules that further advance EMS system development efforts. These rules became effective in 2020, including the requirement for affiliation agreements for small, rural services that build stronger partnerships locally that help better ensure EMS sustainability. We are thankful for the countless miles that Rebecca traveled throughout our state with Bureau Staff to reach EMS Providers in all 99 counties. Her support, guidance, and reassurance fostered the important link between EMS Providers and our state EMS agency during the many challenges and changes over the years. Rebecca also worked tirelessly throughout the COVID-19 pandemic as a tremendous resource for EMS providers as we navigated the uncertain waters of this unprecedented event."

**WENDY BAKER - HALL OF FAME** : "Wendy began her full-time career as a Paramedic on September 15, 2003. Throughout her 20+ year career in EMS, Wendy has mentored many up-and-coming Paramedics, endured many changes in ACLS and BLS/CPR algorithms, met and treated 1000's of patients, and experienced many changes in staff as they retired or moved on in life. Wendy is knowledgeable, sincere, and always eager to jump in and help. She was an expert on protocol, and served many years as the CQI liaison."

**RICHARD YOUNG - HALL OF FAME** : "Mr. Young started his career in EMS as a driver for Lee County Ambulance in 1985. He became an EMT in 1986, and a Paramedic in 1988. During his almost forty-year career in EMS he has served as the Lee County EMS Assistant Director (1986-1995); Lee County EMS Director (1995-1999); Washington County Ambulance Director (1999-2020.) In 1995 Richard also was one of the inaugural members to form the Southeast Iowa EMS Council and served as a member until his retirement in 2020. He helped to write the first set of original state protocols. He has been active on the local, regional and state levels to help promote the growth of EMS in Iowa."

12

## CONGRATULATIONS TO OUR 2022 IEMSA AWARD NOMINEES:

**SCOTT STORK - CAREER EMS PROVIDER OF THE YEAR** : "Scott provides superior patient care, while implementing compassion, sincerity, professionalism and most of all respect with everyone he encounters."

**DAN STERNER - Volunteer EMS Provider of the Year** - "While Dan will tell you he was doing what any other person would have done (responding to a call to an accident of one of their own) in that situation, his act of courage, selflessness, and willingness to help others despite being hurt himself, shows the true character that he has. This was a true act of heroism." outcome of the firefighter

**CARROLL COUNTY AMBULANCE SERVICE - CAREER EMS SERVICE OF THE YEAR** : "This service is striving to be an innovator for EMS in Iowa. The proactive and progressive ideology that all Carroll County Ambulance staff practices and believes in is, without a doubt, providing a substantial benefit to the patients that are graced with their high-quality service."

**GRANVILLE AMBULANCE SERVICE - VOLUNTEER EMS SERVICE OF THE YEAR** : "Granville Ambulance has a deep commitment to their community and their patients. This team has saved lives that most would say were impossible to save. Not only did this team save their lives, but these people are now out living productive, normal lives."

**DELANEY PARISH - DISPATCHER OF THE YEAR** : Delaney has one of the most calm demeanors and her ability to talk people through difficult situations is second to none. Delaney's quick thinking on the evening of Friday, April 30, 2021, helped to save the life of a local resident in Oakville, Iowa.

**JD GRAZIANO - EMS INSTRUCTOR OF THE YEAR** : "Whether in the classroom leading students to evidenced based practice through lecture and cutting edge simulation or providing students role models and preceptors in the clinical and field setting, JD is continuing to push EMS Education



**MICHAEL J HARTLEY - HALL OF FAME** : "Mike became a paramedic in 1981 at the University of Iowa and has maintained that certification to this date, serving more than 40 years as a paramedic. Following his education, Mike worked at Johnson County Ambulance for 10 years, serving as a paramedic, responding to 911 emergencies and managing the education and protocols. Along the way he began teaching for the EMT program at Kirkwood Community College. During this period, Mike also worked as a paramedic for the UI Hospitals and Clinics' Air and Mobile Critical Care services where he responded to the mass shooting in November 1991. In 1992 Mike joined the staff of the University of Iowa's EMSLRC where he started the University's first EMT training program as well as the first 48 hour EMS refresher training program. Unknown to many, Mike was instrumental in bringing emergency medical dispatch training to the State of Iowa and eventually trained 43 counties' dispatch centers in providing CPR and emergency care instructions. Following the attacks on September 11, 2001 and Hurricane Katrina in 2005, it was recognized the University of Iowa Hospitals and Clinics' needed an emergency management coordinator and Mike was named to the position in 2008 as the inaugural Emergency Management Coordinator for UIHC.

While all of achievements speak for themselves and have most certainly led to thousands of lives being saved, Mike never stopped advocating for the first responders in the state of Iowa. Whether it was an emergency preparedness drill, updating a hospital policy, or advancing technology or pharmaceuticals, Mike always advocated for involvement from first responders and the emergency medical services."

**SAMUEL WEICH - HALL OF FAME** : "He served his community for over 20 years, as the Public Works Director and as La Porte City Firefighter and

AEMT. He held multiple roles. He was Assistant Fire Chief and Assistant Ambulance Captain. He also served the community and surrounding area of Vinton with North Benton Ambulance. For La Porte City, he did so much more than any title could give him. He fixed everything he could on our rigs, he participated in every event and training possible. As an AEMT, he was confident and calming. Wonderful with both the patients and the other providers. He answered any questions we had, even if they seemed like stupid questions."

**MARK MELVIN LEHTO** (Posthumously) - **FRIEND OF EMS** : " He is a well-known "savior" to EMS Providers in not only our state, but Midwest region. This guy never failed to put a smile on our faces as he walked through the door of our agencies, and his long tenure truly made him a member of our respective EMS and public safety families. Mark Lehto was a 33-year field service veteran at Stryker. Highly regarded by those in the EMS Industry, he spent many years as a Senior Field Service Representative (Physio-Control) and subsequently a Technical Specialist at Stryker in the Midwest Region. Throughout his career Mark earned numerous awards, was a constant high performer, and had an unrivaled passion to serve his customers. Mark was the poster child for the tremendous pride he took in his work, and as end users of the fine products that Mark serviced, his dedication to excellence, integrity and work made the difference in someone's life. He recognized that the work he did on lifesaving equipment was important, and was proud of his personalized Iowa license plates that said "LIFEPAK". Early in his career he was given an "Honorary Paramedic" award for providing bystander CPR that helped save a life. Mark also mentored and trained countless new employees along the way, showing them a strong work ethic and a high level of integrity. He truly loved his job."



**DAN STERNER**  
 VOLUNTEER EMS PROVIDER OF THE YEAR



**SCOTT STORK**  
 CAREER EMS PROVIDER OF THE YEAR



**DELAINEY PARISH**  
 DISPATCHER OF THE YEAR



**JD GRAZIANO**  
 EMS INSTRUCTOR OF THE YEAR



**DR. JEFFREY MESSERLY, DO**  
 EMS PHYSICIAN OF THE YEAR



**GRANVILLE AMBULANCE SERVICE**  
 VOLUNTEER SERVICE OF THE YEAR



**CARROLL COUNTY AMBULANCE SERVICE**  
 CAREER SERVICE OF THE YEAR



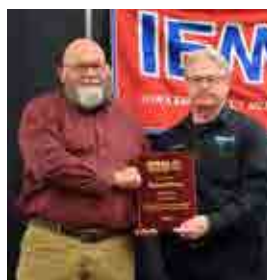
**MARK MELVIN LEHTO** (POSTHUMOUSLY)  
 FRIEND OF EMS



**MICHAEL J HARTLEY**  
 HALL-OF-FAME



**REBECCA CURTISS**  
 HALL-OF-FAME



**RICHARD YOUNG**  
 HALL-OF-FAME



**WENDY BAKER** (NOT PICTURED)  
 CAREER EMS PROVIDER OF THE YEAR



**SAMUEL WEICH**  
 HALL-OF-FAME





## **One Billing Solutions**

**YOUR ONE STOP SOLUTION, FOR MEDICAL + FIRE BILLING**

**Let us serve you, while you serve your community.**

**Discover the  
benefits of  
working with  
One Billing  
Solutions!**

- 90+ years of combined experience
- Simple & efficient onboarding
- A perfect resource for communities of all sizes
- We understand the importance of a steady revenue
- We provide of multitude of services for your convenience

### **How we can help!**

100% collections of billable claims  
We'll handle all of the burdensome administrative work  
Customized reports for monthly accounting  
Experienced and responsive customer support

**Don't leave \$ on the table, let us handle your collections.  
Call or Email us today!**

**We're here for you!**

Monday-Friday  
8am-5pm CST

**Call Today:** (877) 218 - 4392

**Email Us:** [info@onebillingsolutions.com](mailto:info@onebillingsolutions.com)







# 2024 IEMSA AWARD

## NOMINATION Form

**It's not too early to be thinking about nominations you may want to make for the Annual IEMSA Awards.** The awards are announced at the annual conference.

**EMS Providers give of themselves every day, with little or no recognition or show of appreciation.** If you know someone who has given above and beyond, please nominate that person for this prestigious recognition.

**To nominate a person or service for one of these awards** you must:

**1>** complete this form. or online for here:  
[http://www.iemsa.net/awards\\_nominations.htm](http://www.iemsa.net/awards_nominations.htm)

**2>** include a letter of recognition/nomination.

**3>** submit your nomination to the IEMSA office before October 15 2024. Return the completed form by mail to IEMSA, 5550 Wild Rose Lane, Ste. 400, WDM, IA 50266, e-mail to [administration@iemsa.net](mailto:administration@iemsa.net) or fax to 877-478-0926.

**> Individual**

- > ☐ **Volunteer** EMS Provider of the Year
- > ☐ **Career** EMS Provider of the Year
- > ☐ Instructor of the Year
- > ☐ Dispatcher of the Year
- > ☐ Legislator of the Year
- > ☐ EMS Physician of the Year
- > ☐ Hall of Fame
- > ☐ Friend of EMS

**> EMS Service**

- ☐ **Volunteer** EMS Service Provider of the Year
- ☐ **Career** EMS Service Provider of the Year

**Nominating Service/Person --Contact Name**

Nominating Service/Organization Name

Nominating Contact E-Mail Address

**Nominee's Info-- Name**

Company/Service

Address

City/State/Zip

Phone Number

E-Mail Address

EXPLAIN WHY THIS NOMINEE SHOULD RECEIVE THE AWARD  
 (ATTACH A SEPARATE SHEET IF NEEDED):

Real-time feedback on manual ventilation

**ZOLL'S NEWEST MONITOR/DEFIBRILLATOR:  
THE X SERIES® ADVANCED**



[zoll.com/xadvanced](https://zoll.com/xadvanced)

**ZOLL®**

# THE PRESIDENT'S ROAD TRIP(s)

ANDY NEY, IOWA EMS ASSOCIATION PRESIDENT



IEMSA Members – I am SO EXCITED to bring you NEW content from IEMSA! A PODCAST! Some of you are familiar with podcasts, some maybe not. Either way, we encourage you to download a podcast app or to listen directly on our website [rss.com/podcasts/iemsa](https://rss.com/podcasts/iemsa) where you will listen to episodes where I interview current board members, EMS industry experts, and other Iowa EMS stakeholders. We will be dropping new episodes regularly!

This initiative started from an idea I had during a strategy meeting in 2019. I've been listening to podcasts since 2013 and thought with advances in technology there must be a low-cost way to do this. After a few tests with different software and a long chat with Michael Kaduce, I was able to find the most effective and efficient way to upload episodes and broadcast them to multiple apps!

When I was elected President for the 2023-2024 term, I became more focused on this podcast initiative and how to create content for it. At this year's strategy meeting, we brainstormed the idea of a Presidential Road Trip. Originally, I thought this would be a great way to get a week off work (LOL), but it is difficult being gone for more than two or three consecutive days. So, I decided I would break down these trips into little, segmented road trips. Besides, what would the odds have been if I was able to visit with every board member all in the same week?!

I started my trip(s) in May 2023. My first round of visits was with Spencer Armstrong (North Central), Carl Ginapp (North Central), Nick Jellison (North East), Jon Dunham (At-Large), John Cockrell (Education), and Dawn Brus (At-Large). During these visits, we discuss the Board of Directors Manual/Handbook we drafted as an educational document for new or existing Board Members, get a station tour if applicable, snap a picture of the Board Member by something related to EMS, and we record an episode for the podcast.

During this first round of visits, I was amazed by the beauty that Iowa has to offer; the geographical landscape that we take for granted is so picturesque that it truly must be like heaven. The rolling hills throughout the State, fields of corn, beans, hay, and livestock as the sunset rises or sets, are a thing of beauty. I visited a few local restaurants and coffee shops and there is a true sense of entrepreneurship that I LOVE about our small towns in Iowa! They provide some of the best food and service that we also underappreciate!

Shout out to The Other Place in Clear Lake on an outstanding BLT! I also found that every town in Iowa must have either a Casey's General Store, a Kwik Star, or a Dollar General! They are EVERYWHERE!

I hope you enjoy; I am open to feedback and ideas for more episodes!



**CARL GINAPP**  
NORTH CENTRAL REGION BOARD MEMBER



**DAWN BRUS**  
AT-LARGE BOARD MEMBER



**JON DUNHAM**  
AT-LARGE BOARD MEMBER



**JOHNATHAN COCKRELL**  
EDUCATION BOARD MEMBER



**NICK JELLISON**  
NORTH EAST REGION BOARD MEMBER



**SPENCER ARMSTRONG**  
NORTH CENTRAL REGION BOARD MEMBER





# A HUGE THANK-YOU TO OUR AFFILIATE MEMBERSHIP

THESE IEMSA **AFFILIATE MEMBER** ORGANIZATIONS ARE MAKING A DIFFERENCE.  
YOU CAN TOO—**BE A LEADER JOIN IEMSA TODAY!**

Ackley Vol Ambulance Service	Danbury Ambulance Service	Keokuk County Ambulance Service	Paramount EMS
Adair Fire & Rescue	Davenport Fire Department	Kirkwood Community College	Pleasant Hill Fire Department
Adams County Ambulance	Decatur Co Hospital EMS	Knoxville Fire Department	Polk City Fire Department
Altoona Fire Department	Denver Ambulance Service	Kossuth County EMS	Prairie City Ambulance
American Medical Response(AMR)	Des Moines Fire Department	La Motte Fire and Rescue	Prescott Fire & Rescue Association
Anamosa Area Ambulance Service	Des Moines University	La Porte City Ambulance	Regional Health Services of Howard County
Andover Ambulance Service	Dubuque Fire Department	Lake Mills Ambulance Service	Remsen Ambulance Service
Ankeny Fire Department	Dysart Ambulance Service	Lakes Regional Healthcare	Renwick Ambulance
Area Ambulance Postville	Eagle Grove Department of EMS	Lamoni EMS	Riceville Ambulance Inc
Area Ambulance Service	Earlham Rescue	Lansing EMS	Rock Valley Ambulance
Arrow Manufacturing	East Poweshiek Ambulance	Le Mars Fire-Rescue	Saylor Township Fire Department
Atkins First Responders	Eastern Iowa Community College	Lee County EMS	Shelby Fire & Rescue
Atlantic Fire & Rescue	Elberon Fire & Rescue	LeGrand First Responders	Sidney Fire & Rescue
Avoca Vol Rescue & Fire	Eldora/Ackley Ambulance	Lewis First Responders	Sioux Center Ambulance
Battle Creek Comm Amb Serv	Elkhart Fire Department	Lifeguard Air Ambulance	Sioux City Fire Rescue
Baxter Rural Fire & Rescue	Ely Volunteer Fire Department	Lisbon Fire and Rescue	Slater EMS
Beaman Conrad Emergency Response Team (BCERT)	Emerson Volunteer Fire Rescue Association, Inc.	Lisbon Mt Vernon Ambulance	Southern Appanoose County First Responders
Bellevue Ambulance Service	Epworth Community Vol. Firemen Inc.	Liscomb First Responders	Spencer Hospital
Belmond Ambulance Service	Evansdale Fire Rescue	Logan Fire & Rescue	Stanwood Ambulance
Bernard Rescue Unit, Inc.	Fairbank Fire Department	Louisa County Ambulance	State Center EMS
Bettendorf Fire Department	Farmington EMS	Madison County Ambulance	Story City First Responders
Bi-County Ambulance Inc	Fonda Ambulance Service	Mahaska County Emergency Management	Stuart Rescue Unit
Blairstown Ambulance	Fort Dodge Fire Rescue	Malvern Volunteer Rescue Inc	Superior Ambulance
Boone County Hospital	Fremont County Sheriff's Department	Martelle First Responders	Tama Ambulance Service
Buffalo Center Vol Amb Service	Garner Vol Ambulance Service	Martensdale Fire Dept	Taylor County Ambulance
Burlington Fire Ambulance	Gilman First Responders	Mary Greeley Medical Center	Tipton Ambulance Service
Calhoun County EMS	Glenwood Fire Rescue	Mason City Fire Department	Toledo Emergency Service
Camanche Fire Department	Grand Mound Fire & Rescue	Ambulance	Traer Ambulance Service
Care Ambulance	Granger Community Ambulance	Mechanicsville Ambulance	Tripoli Ambulance Service
Carlisle Fire Department	Granville Fire & EMS	MEDIC EMS	University of Iowa SIM-IA
Carroll Co Ambulance Service	Gravity Rescue	Melcher Dallas Emergency Response	Urbandale Fire Department
Carson Fire Dept.	Greater Regional Medical Center (GRMC)	Mercy College of Health Sciences	Van Horne First Responders
Cedar Rapids Fire Department	Green Mountain First Responder	MercyOne Elkader	Veterans Mem.Hosp.Ambulance
Center Point Regional Ambulance	Greene County Ambulance	MercyOne Waterloo Medical Center	Villisca Ambulance Association
Centerville Fire & Rescue	Grinnell Fire Department	Meriden Fire Department	Walcott Fire Department
Cherokee County EMS Association	Griswold Fire & Rescue	Mitchell County EMS	Wapello Community Ambulance
Cherokee Regional Medical Center	Gundersen Health System Ambulance	Mondamin Fire & Rescue	Washington County Ambulance Service
Chickasaw County EMS	Guttenberg Ambulance Service	Monticello Ambulance Service	Washington Fire Department
Chickasaw County Rescue Squad	Hancock Fire & First Responders	Morning Sun Ambulance Service	Waterloo Fire Rescue
City of Grundy Center EMS	Hartford Vol Fire & Rescue	Muscatine Fire Department	Waterville Ambulance Service
City of Pella Community Ambulance	Hartley Ambulance	Nashua Area EMS	Waukeg Fire Department
Clarinda Regional Health Center	Hawkeye Community College	New Hartford Ambulance	Waverly Health Center Ambulance
Clarion Ambulance Service	Hiawatha Fire Department	New Sharon Fire & Rescue	West Des Moines EMS
Clay County EMS Association	Humeston First Responders	New Virginia Fire and Rescue	West Franklin EMS Inc
Clay Township Fire Rescue	Iowa Central Community College	Newton Fire Department	West Hancock Ambulance Service
Clinton Fire Department	Iowa Falls EMS	Nichols First Responders	West Liberty Vol Fire Dept
Clive Fire Department	Iowa Western Community College	North Sioux City Fire and Rescue	Western Iowa Tech Community College
Clutier 1st Responders	Jackson Co. Regional Health Center Ambulance Service	Northeast Iowa Community College	Wheatland Emergency Medical Services
Coggon Fire Department	Jasper County Emergency Management Agency	Northern Warren Fire Department	Winneshiek County Emergency Management
Colfax Fire Department	Jefferson County Ambulance Service	Northwest Iowa CC	Winneshiek Medical Center Ambulance
Columbus Junction Ambulance Service	Jewell Fire & Rescue	Northwood Vol Fire and Rescue	
Community Ambulance Service of Preston	Johnson County Ambulance	Norwalk Fire Department	
Coralville Police Department	Johnston Grimes Fire & Rescue	Norway Fire & Rescue	
Council Bluffs Fire Department	Kellogg Fire & Ambulance Dept	Olin Ambulance Service	
Crecent Rescue		Orange City Area Health System	
Dallas Co EMS		Palo Alto County Ambulance	
		Panora EMS	

(Members as of —09/19/2023)



# AFFILIATE MEMBERSHIP

## FROM A SERVICE DIRECTOR'S STANDPOINT AND WHY THE "BEAN COUNTERS" APPROVE

BY TRACY FOLTZ—CHIEF MEDIC - SIOUX CENTER AMBULANCE, NW REGIOIN BOARD MEMBER, EXECUTIVE BOARD SECRETARY

I started writing this article as an IEMSA Executive Board Member, then I decided I should complete it as a Service Director. Like every director, I focus first and foremost on providing our team with the education, knowledge and tools they need to provide the best possible care to our patients. As an Affiliate Member, our service is able to take advantage of IEMSA's affordable CEs/CEHs and update to date information available at the Iowa EMS Annual Conference & Trade Show, Regional EMS Billing & Documentation Conference, Leadership Conference & Service Directors Networking Event, Leadership Academy and more. As a director, I am able to network with other leaders and directors to find out how their services evolve and to share struggles we all face and best practices our services use to succeed. I also feel like I have a voice in the direction Iowa EMS is heading. As an Affiliate Member, your service is offered 1 FREE Seat in the Pre-Conference Leadership/Management Workshop at the Annual IEMSA Conference & Trade Show held in Des Moines every November.

Here is what the "Bean Counters" like...In a leadership role, you are always looking for ways to maximize how far the budget will stretch and how to minimize expenditures. However, one budget line item our service automatically renews every budget cycle is our IEMSA Affiliate Membership. Your service receives free individual memberships (1-4) based on your service level of Affiliate Membership, based off of service call volume. Our service even purchases individual memberships for

all of our members, even though some may go "unused." Why? you may ask. The answer is simple, the BENEFITS far outweigh the cost. As an Affiliate Member, your service receives financial significant benefits. The group purchasing program (currently contracted with Bound Tree Medical) is included with your affiliate membership. The discounted pricing for products averages out to an estimated savings of 40%, plus free shipping as well. **This savings alone more than covers our services affiliate and individual memberships annual fees.** Our service participates in the Iowa GEMT program and contracts through Public Consulting Group (PCG) for our Medicaid cost reporting. PCG provides a discounted fee with no up-front costs for IEMSA Affiliate members for this service. With their assistance, our Medicaid reimbursement for emergency transport has increased by nearly 400%. Your service is able to post job ads on the IEMSA website at no cost.

**Although there are too many benefits to write about, I wanted to highlight a few of the significant ones I feel as a Service Director for a smaller service make an Affiliate Membership well worth the cost.** I feel the most important benefit of either an Affiliate or Individual Membership is that your service and team have a voice and representation through the IEMSA board members who represent your region. Please reach out to your area board representative if you have any additional information or have any questions.

### WHAT ARE THE BENEFITS?

- > **Job Openings** at your service can be posted on our Job Posting Area of our Website—just complete the application at this link— <http://www.iemsa.net/employment.htm> when you have an opening—and we will post it for you. Your service must be an active member to post. There is no limit on the number of postings or how long the opening is posted. We understand our Job Board is, more effective, and less expensive than other job sites, like monster.com and other job sites.
- > **(1-3) FREE IEMSA Individual Membership(s)** for a provider from your organization—(\$30-\$90 Value based on membership level)
- > **25% off an Exhibit Booth** at the IEMSA Conference & Trade Show
- > **(1) FREE Seat in the Pre-Conference Leadership/Management Workshop** at the Annual IEMSA Conference & Trade Show—held in Des Moines every November— (\$120 Value)
- > **Deep Discounts on Equipment and Products**—Your service/organization will be automatically enrolled in the Group Purchasing Program—once you're an affiliate member of IEMSA, within 5-7 days from purchase of your IEMSA membership Boundtree Medical will activate your account to apply IEMSA discount levels to your account. This alone will more than re-pay your membership dues with the discounts you see, beginning with your first order. You will enjoy FREE Shipping as well.

- > **NEW BENEFIT!** Ground Emergency Medical Transportation (GEMT) Program On-Boarding Services with PCG (Public Consulting Group) at a Deep Discounted Contingency Fee

IEMSA finalized the contract to make these funds available to Iowa EMS Services 2 years ago to help reimburse public EMS providers for uncompensated costs related to the provision of transports to Medicaid patients. In the past 2 years alone, PCG public EMS providers have received \$7.6 million dollars in federal match funds under IA GEMT. Our service or organization Affiliate Members will automatically be allowed the deep discounted contingency fee % with PCG (Public Consulting Group) negotiated at 9% for Affiliate Level 1-3 and 11% for Affiliate Level 4 Members. There are no up-front fees. The PCG Contingency fee will begin once all on-boarding tasks are completed and enhanced GEMT revenues are received by your service. The contingency fee will be applied to the GEMT Federal Share portion of the provider's reimbursement only. IEMSA negotiated the fee rate only. All other terms of the contract are negotiated and contracted by your service with PCG.

This is not a billing service, PCG is a specialized GEMT consultant, your contracted billing service (if you have one) or in-house billing service will still file the claims. PCG's goal is to assist IEMSA members in maximizing supplemental reimbursement while reducing audit risk and maintaining compliance with ever-changing state and federal policies. <https://dhs.iowa.gov/ime/providers/tools-trainings-and-services/medicaid-initiatives/GEMT>

19



## MEMBERSHIP UPDATE

MEMBERSHIP TOTALS AS  
OF SEPTEMBER 2021:



1498

+



216

+



31

= 1745





**IEMSA**  
Iowa Emergency Medical Services Association

## AFFILIATE MEMBERSHIP APPLICATION



**\$50/YEAR**  
( < 50 Calls/Year)



**\$100/YEAR**  
(51-500 Calls/Year)



**\$250/YEAR**  
(501-2,499 Calls/Year)



**\$350/YEAR**  
( > 2,500 Calls/Year)

**TO JOIN IEMSA ONLINE:** Go to [http://iemsanet/member\\_account.htm](http://iemsanet/member_account.htm) - You must be designated as the primary contact for your organization to purchase an affiliate membership online. If you are, click the "Login Here" button. You will be prompted to log-in to your IEMSA Individual Account—Usernames are set to the email address on file, use the "reset password button" to reset your password. Email [administration@iemsanet](mailto:administration@iemsanet) to reset your password or assign primary contact.

**Don't have an IEMSA Account?** **click on the "Guest Registration" Link** to create an account.

**Once Logged-in—go to the "Online Store" tab at the top of your screen**, click on the "Affiliate Membership Level that fits your service call volume, complete the FREE individual designation fields, and add it to your cart. Process payment and you're now registered. You will receive a receipt and confirmation immediately by email.

The payment options include: credit/debit card or select "Mail my Check". Memberships are not activated until payment is received. **Mail Checks to:** IEMSA, 5550 Wild Rose Lane #400, West Des Moines, IA 50266.

**TO REGISTER BY MAIL OR FAX:** Complete this page and return with your check to: IEMSA, 5550 Wild Rose Lane #400, West Des Moines, IA 50266 — or FAX with Credit Card Info this form to: 877-478-0926. You will receive a confirmation email once your payment is received and/or processed. If you do not receive an email—please contact the office to confirm your membership was received.

20

### Credit Card or FAX/EMAIL AFFILIATE Membership Application:

☐ LEVEL 1- **\$50/YEAR**    ☐ LEVEL 2- **\$100/YEAR**    ☐ LEVEL 3- **\$250/YEAR**    ☐ LEVEL 4- **\$350/YEAR**

Organization/Service Provider Name

Primary Contact Name / Email Address

(Home) Address

City

State

Zip

Phone #

1st FREE Individual Membership — Email Address (mandatory)

IA EMS Certification #

**All Affiliate Levels Complete** —Affiliate Level 1 & 2 receive -(1) FREE Membership—Designate Here

2nd FREE Individual Membership — Email Address (mandatory)

IA EMS Certification #

**Level 3 & 4 Complete** —Affiliate Level 3 receive -(2) FREE Memberships

3rd FREE Individual Membership — Email Address (mandatory)

IA EMS Certification #

**ONLY Level 4 Complete** —Affiliate Level 4 Receive -(3) FREE Memberships

**PAYMENT METHOD:** ☐ MasterCard    ☐ Visa    ☐ Check Enclosed-Payable to IEMSA

Credit Card Number

Exp. Date

Name on Card

3-Digit Security Code on Back of Card



# Public Consulting Group (PCG) is committed to providing practical solutions.

Our experts are ready to help local fire and emergency medical services (EMS) providers nationwide design and implement Ground Emergency Medical Transportation (GEMT) programs.

## We offer:



Revenue Optimization,  
Cost Settlement,  
and Supplemental  
Payment Services



Medicare Ground  
Ambulance Data  
Collection



Fire and EMS  
Consulting  
Services



For a free quote and to learn more about our proven approaches that deliver results, please scan the QR code.



# YOUR PARTNER IN EMS EXCELLENCE

REAL-WORLD SOLUTIONS  
FOR FIRST RESPONDERS



## **Online Training**

Accredited courses  
developed by leading  
EMS experts



## **Wellness Resources**

Confidential, mobile  
wellness support for  
high-stress occupations



## **Grant Services**

Hands-on assistance  
from specialists

**SCHEDULE YOUR FREE DEMO TODAY**

844-312-9500 | [info.lexipol.com/EMS](http://info.lexipol.com/EMS) |   



# > IEMSA INDIVIDUAL MEMBERSHIP 101

## NEED CE's? NEW MEMBER BENEFIT

IEMSA was established in 1987 and has been actively involved in EMS in many facets. No matter your level of service, type of department, or patch on your sleeve, IEMSA is here to serve you and help be your VOICE be heard in Iowa. Some join for the professional recognition and networking opportunities, while some join for the member benefits and discounted educational opportunities that are held throughout the year across Iowa. Others join for the resources, group purchasing, quarterly VOICE publication, our strong advocacy efforts, and timely member alerts through eNews. There are plenty of other associations, such as NAEMT, IAFF, AAA, NAEMSP, NAEMSE, and many more, but only IEMSA is geared towards focusing on EMS issues in Iowa that affect all of us personally and professionally.

> **WHY SHOULD YOU SPREAD THE WORD ABOUT IEMSA MEMBERSHIP?** There are so many benefits with this low cost membership. The most important for any EMS provider is the \$10,000 accidental death/dismemberment policy offered to each member. In our high risk line of duty this could be a huge asset to your family. If you are a member, have you filled out your beneficiary designation? We want to make sure all families receive this benefit if needed so fill out this form ASAP. You can find the form at this link: [http://www.iemsa.net/pdfs/beneficiary\\_form.pdf](http://www.iemsa.net/pdfs/beneficiary_form.pdf)

- > **NEW!!! Education is another important benefit for all members.** You will receive a substantial discount on all IEMSA sponsored events, including our annual conference —an amazing event that is a lot of fun, offers top quality certified continuing education, featuring well-known local and national speakers. In addition, IEMSA has partnered with Career Cert to offer IEMSA members (4) free hours of continuing education (CAPCE Certified) and a discount on additional hours you'd like to purchase. And finally, with your IEMSA Membership you receive a 25% off (\$10 off) NAEMT dues with proof of current membership.
- > **IEMSA is your advocate at the state level and local level.** Each region has representatives that you can reach out to. We have made great strides in Iowa with the legislators. Your involvement in your professional association is important to EMS. We need your voice to make important improvements in the state and national level. We can't do it without you!

There are also numerous benefits for affiliate organizations, students, retired-active individuals, corporate, and training centers memberships! To see all the great benefits please go to the IEMSA site at: <http://iemsa.net/membership.htm>

**JOIN ONLINE TODAY AT:** [http://iemsa.net/member\\_account.htm](http://iemsa.net/member_account.htm) For step-by-step details —follow the instructions on the screen. **NEW MEMBERS SET-UP AN ONLINE ACCOUNT CLICK HERE**

### MEMBERSHIP BENEFITS OVERVIEW

	\$ 10,000 AD&D Policy	FREE Individual Memberships	Member Discounts on Educational Events, Patches and Booth Space (for Affiliate Members.)	DISCOUNTED GEMT ON-BOARDING SERVICES Provided by PUBLIC CONSULTING GROUP	Job Postings on the IEMSA Website and the Iowa EMS Association Facebook Group	DISCOUNTED EMS EQUIPMENT & SUPPLIES FROM BOUNDTREE MEDICAL	VOICE and eNEWS	25% (\$10 off) NAEMT Membership Discount
Student		X	X				X	X
Active Retired			X				X	X
Individual	X		X				X	X
Affiliate		X	X	X	X	X	X	X
Corporate		X	X				X	





# EMS REVIEW

ONLINE COURSES



Learn from industry leading peers at your own pace—anytime, anywhere, and on any connected device.

Our curriculum meets National Registry renewal requirements for all EMS levels - EMR, EMT, AEMT, and Paramedics.

[AIRMETHODS.COM/ASCEND](http://airmethods.com/ascend)



Learn more about AirMethods Ascend online training.

Life  Net

844.359.9111

FOR EMERGENCY AIR MEDICAL, MAKE US YOUR FIRST CALL



## IEMSA BILLING & DOCUMENTATION

# CONFERENCE

BY CHUCK GIPSON : BILLING CONFERENCE CHAIR

This year's Billing and Documentation Conference was our first in-person conference since COVID shutdown our in-person events and we had a great turnout, a total of eighty-six people attended the 19th Iowa EMS Association Billing and Documentation conference held on August 15 + 16, 2023 at the Hilton Garden Inn in West Des Moines. Once again, Doug Wolfberg, founding partner of Page, Wolfberg & Wirth, and one of the best known EMS attorneys and consultants in the United States, captivated those attending with all 12 required hours of comprehensive education helpful for not only billers, but EMS Providers and Service Directors. Many who attended appreciated the fact that all their mandatory and elective NAAC continuing education recertification hours were included in this one seminar.

To finish things off we offered a 1/2 day workshop—offering Iowa EMS Services a chance to learn from our partners at Public Consulting Group (PCG) the rules of participation in the Iowa Ground

Emergency Medical Transport program (IA GEMT). IEMSA worked to make this fund available to Iowa EMS Providers in 2018 to help reimburse public EMS providers for uncompensated costs related to the provision of transports to Medicaid patients. In the first 2 years alone, IEMSA Public EMS providers received \$7.6 million dollars in federal match funds under IA GEMT. Attendees learned the ins and outs of eligibility for this program.

**SAVE-THE-DATE for next year's 20th ANNUAL IEMSA REGIONAL BILLING & DOCUMENTATION CONFERENCE on August 13 + 14, 2024 at the West Des Moines Hilton Garden Inn,**



Attendees also enjoyed a casual jam session at the networking event, by Mark McCulloch on Guitar, Chuck Gipson on Drums and vocals and guitar by Doug Wolfberg —picture above.

25

## WHEN LIVES ARE ON THE LINE YOU NEED PRODUCTS YOU CAN TRUST

# FIRE & EMS LIFETIME WARRANTY

- M Series™
- L31 Series
- B6 Series
- Freedom® Series Lightbars
- Micro Freedom® Series
- Pioneer™ Scene Lighting\*  
(\*Excludes Pioneer Life)
- PSTANK2 •PSCOMP – Illumination Series
- TANF65 or 85 TA Series
- 6" and 8" LED Ambulance Series
- EZ Scene Light™ Series
- WeCanX® 2250 Series



This warranty applies to the above-listed products installed only on fire and emergency medical services apparatuses built by original equipment manufacturers and listed in NFPA 1901, NFPA 1906, NFPA 1917, KKK-1882F, CAAS, and AMD standards, including pumpers, rescues, aerials, wildland, and ambulances. Please refer to Whelen's Warranty Policy for further details, limitations and exclusions.

**WHELEN®**  
MANUFACTURED IN AMERICA

CALL US: 515-981-5967 | VISIT US: WReeves.com | WReeves and Associates Inc. | P.O. Box 477, Norwalk IA, 50211





## JOIN US FOR A BEAUTIFUL CEREMONY **HONORING OUR OWN**

**SATURDAY, NOVEMBER 11, 2023 AT 7:45 AM**

> THE CEREMONY WILL BE HELD AT THE 2023  
IEMSA ANNUAL CONFERENCE, IN THE CCCU VETS  
MEMORIAL BUILDING IN DES MOINES (LEVEL 3 BALLROOM),  
**WE WILL REMEMBER AND HONOR OUR EMS HEROES WHO ARE NO  
LONGER WITH US.**

If you know of any EMS, Fire, Dispatch, EMS Instructor, or Friend of EMS (who made significant contributions to our EMS profession) that is no longer with us and should be honored in this ceremony, please contact our "Honoring Our Own" Committee at:  
[honoringourownmemorial@gmail.com](mailto:honoringourownmemorial@gmail.com)

**stryker**



**LIFEPAK® 15**  
monitor/defibrillator



**Xpedition™**  
powered stair  
chair



**LUCAS® 3, v3.1**  
chest compression  
system



**Power-PRO™ 2**  
powered ambulance cot

**Scan the code or visit [stryker.com/emergencycare](https://stryker.com/emergencycare) to learn more about Stryker's products.**



Stryker or its affiliated entities own, use, or have applied for the following trademarks or service marks: LIFEPAK, LUCAS, Power-PRO, Xpedition, Stryker. All other trademarks are trademarks of their respective owners or holders. The absence of a product, feature, or service name, or logo from this list does not constitute a waiver of Stryker's trademark or other intellectual property rights concerning that name or logo. Copyright © 2023 Stryker. 09/2023

**Reach out to your Stryker  
Iowa representative today!**

**Ali Rood**  
**West Iowa**  
515-669-8586

**Ryan From**  
**East Iowa**  
319-331-9111



## CONGRATULATIONS 2022 SCHOLARSHIP WINNERS:

# IEMSA EMS EDUCATIONAL SCHOLARSHIP

> 2023 SCHOLARSHIPS AWARDED IN NOVEMBER

JAMIE TEMPLE, EDUCATION BOARD MEMBER/SCHOLARSHIP CHAIR

> This year will be the seventh year IEMSA has awarded scholarships. Scholarship Funds are intended to assist those hoping to enter the emergency medical services job force or for established members of the EMS community looking to advance their education and certification level. Emergency Medical Services personnel are essential features of any disaster management effort. Whether paid or volunteer, EMS is often the first to arrive at accident sites, making split-second life-saving decisions during every shift. Quality education and comprehensive training is essential for EMS providers and paramedics, because no two disasters, emergencies or accidents are alike. The goal of the IEMSA annual scholarship fund is to encourage continued improvement and advancement for our state's providers. Applications are in for the 2023 Scholarships, we look forward to awarding those scholarships at the Annual Conference in November.

**PLEASE CONSIDER APPLYING FOR A 2024 SCHOLARSHIP NOW OR FORWARD INFORMATION ON TO OTHER POTENTIAL RECIPIENTS- DEADLINE 9/1/24.**

- > Are you a student looking for assistance to help pay for your EMS Course? Are you a service that has students that are in an EMS Class that you are paying for? If you answered yes to either one of the questions above IEMSA can help. In 2017 the IEMSA Board of Directors approved the allotment of \$7,500.00 to be given away in scholarships to students who are enrolled in an Iowa EMS Program.
- > The goal of the IEMSA annual scholarship fund is to encourage continued improvement and advancement for our state's providers. Initial certification requires schooling, and continuing education, and it also plays an important role in keeping EMS personnel on the cutting edge of life-saving first responder protocols. College level programs exist at two and four-year colleges. Whether basic or advanced-EMT, school can be costly. IEMSA would like to assist individuals with scholarship funding to help achieve or further career goals.
- > Emergency Medical Services personnel are essential features of any disaster management effort. Whether paid or volunteer, EMS is often the first to arrive at accident sites, making split-second life-saving decisions during every shift. Quality education and comprehensive training is essential for EMS providers and paramedics, because no two disasters, emergencies or accidents are the same.
- > There will be six \$1,000 scholarships awarded to one student from each of our six IEMSA Regions. The only guidelines are that the student must be a student member of IEMSA and the training program that they are enrolled in must be an affiliate member of IEMSA. In addition to these six scholarships we will be awarding two \$500 scholarship each to two individuals that are pursuing a certificate for EMR, EMT, AEMT or PARAMEDIC.
- > One \$500 scholarship will also be awarded to a training program to be utilized at their discretion. Funds are intended to assist those hoping to enter the emergency medical services job force or for established members of the EMS community looking to advance their education and certification level.

- > **SHYANNE K. FAIRCHILD** : \$1000 Region Scholarship  
Paramedic School at Southeastern Community College
- > **LOGAN PATRICK HELD** : \$1000 Region Scholarship  
Paramedic School at Western Iowa Tech Community College
- > **RACHAEL LUTRICK** : \$1000 Region Scholarship  
AEMT School at University of Iowa EMSLRC
- > **HOGAN MILLER** : \$1000 Region Scholarship  
Paramedic School at Kirkwood Community College
- > **MATTHEW PETERSON** : \$1000 Region Scholarship  
Paramedic School at North Iowa Community College
- > **TYLER VORWALD** : \$1000 Region Scholarship  
Paramedic School at North Iowa Community College
- > **KAYLEE WEAVER** : \$500 Scholarship  
EMT School at University of Iowa EMT Academy

## > APPLY TODAY FOR A 2024 IEMSA SCHOLARSHIP

- > TWO \$500 ALL-STATE SCHOLARSHIPS AND
- > SIX \$1,000 SCHOLARSHIPS AVAILABLE
- > APPLICATION DEADLINE SEPTEMBER 1, 2024

Download Application Here (PDF) :

[http://iemsa.net/pdfs/Scholarship\\_Application.pdf](http://iemsa.net/pdfs/Scholarship_Application.pdf)

### SCHOLARSHIP SELECTION PROCESS:

Scholarships are one time only and are not awarded on a repetitive basis. IEMSA members and direct family of IEMSA members will be given preference. Scholarship recipients will be contacted individually and announced at the 34th Annual IEMSA Conference & Trade Show, on Saturday, November 11, 2024 at the EMS Ceremony Luncheon.

### STUDENT QUALIFICATIONS AND REQUIREMENTS:

- > YOU MUST BE A CURRENT MEMBER OF IEMSA. STUDENT MEMBERSHIPS ARE FREE for the first year of training.
- > THE TRAINING CENTER/COLLEGE THE STUDENT IS ENROLLED IN MUST BE AN IEMSA AFFILIATE TRAINING CENTER MEMBER for their student to receive the award.
- > TRAINING CENTER/COLLEGE MUST BE LOCATED IN IOWA.
- > A LETTER OF RECOMMENDATION FROM THE TRAINING CENTER/COLLEGE must accompany the scholarship application.
- > SCHOLARSHIP CHECKS WILL BE MADE PAYABLE TO the awardee designated Training Center.
- > DEADLINE TO RECEIVE SCHOLARSHIP AWARD FUNDS December 31, 2024.
- > ONLY THOSE APPLICATIONS WHICH ARE COMPLETE, accurate and received by the deadline will be considered.
- > IEMSA WILL NOTIFY ALL APPLICANTS BY EMAIL of the status of their application.
- > EMS SCHOLARSHIPS ARE NOT AWARDED FOR course work already taken.
- > STUDENTS AWARDED A SCHOLARSHIP—must submit a "Statement of Acceptance" and send it to the IEMSA office before December 1, 2024.

### THE FOLLOWING CRITERIA WILL BE USED IN THE SCHOLARSHIP SELECTION PROCESS:

- > Dedication to the profession.
- > Financial need.
- > Dedication to the community.
- > Service as a positive ambassador for IEMSA.

# IEMSA

## 33<sup>RD</sup> ANNUAL CONFERENCE & TRADE SHOW



### REGISTER BEFORE OCTOBER 31<sup>ST</sup> AVOID \$50 LATE FEE!

To avoid the Late Fee your registration must be received in our office or posted online by 12AM October 31st.

**ALL REGISTRANTS  
WILL RECEIVE A GIFT AT  
REGISTRATION.**

## HIGHLIGHTS

### > EXHIBIT HALL : HY-VEE HALL C

LARGE DISPLAY OF THE TOOLS OF YOUR TRADE  
EXHIBIT HALL HOURS:

#### • THURSDAY, NOVEMBER 9<sup>TH</sup>

VENDOR HALL OPENS AT 11:45AM-AND WILL STAY OPEN THROUGH THE WELCOMING RECEPTION, WHICH ENDS AT 6:30PM THIS YEAR. **SO—REGISTER EARLY AND DROP YOUR RAFFLE TICKET AT THE IEMSA BOOTH — DRAWINGS WILL BEGIN AT 5:00PM—MUST BE PRESENT TO WIN.**

VENDOR HALL WELCOMING RECEPTION  
5:00PM-6:30PM

#### • FRIDAY, NOVEMBER 10<sup>TH</sup> : 9:15AM-4PM

**GIVE-AWAY WINNERS ANNOUNCED IN EXHIBIT HALL**

DRAWINGS WILL BE DONE DURING THE AM AND PM BREAKS ONLY—MUST BE PRESENT TO WIN.

#### • SATURDAY, NOVEMBER 11<sup>TH</sup> EXHIBIT HALL CLOSED!

> **AWARDS CEREMONY :** Saturday, November 11th, 1205-1305, during lunch. Awards given for EMS Service - Career and Volunteer, EMS Individual - Career and Volunteer, EMS Instructor, Dispatcher, Friend of EMS, and Hall of Fame.

> **HONORING OUR OWN :** Saturday, November 11th, 0745-0845 - Ballroom (Level 3) Please join us in honoring those no longer with us at this moving ceremony.

> **LUNCHES :** Again this year, we have elected to allow you the option and convenience of purchasing lunch during the conference. Our venue is a little farther away from the usual lunch sites, and with the short lunch break, we are encouraging you to include our plated hot lunch in your registration. In an attempt to keep the conference affordable, we kept the lunch price at \$15/day, a discounted price from what we are charged. Lunches must be purchased when you register—you will not be able to purchase a lunch the day of the event. **NEW! The exhibit hall will be open for lunch with food vendors and the Concession Stand. Concession stands will be available in the Exhibit Hall during the lunch break on Thursday, Friday and Saturday in Hall-C.**

> **REGISTRATION DEADLINE:** Register prior to **October 31st to ensure entrance to the conference.** Registrations received after this date and on-site registrations may be limited. IEMSA will not invoice services for payment. PO's are not an accepted form of payment. Register by October 31st before 12am to **SAVE \$50.**

> **CONFIRMATION:** Registrations processed online will automatically receive a registration confirmation immediately via email. All others will not receive a confirmation unless requested by email to: [administration@iemsa.net](mailto:administration@iemsa.net).

> **CANCELLATION/REFUND POLICY:** Refunds, less a \$50 processing fee, will be made for cancellations made prior to October 15th. No refunds will be made for cancellations after October 15th. IEMSA reserves the right to cancel any session or special event that does not meet the minimum requirements, or to change a speaker as necessary.

> **REGISTRATION SIGN-IN:** Packets and badges will be available for pick up in the first floor lobby of the Veteran's Memorial Community Choice Credit Union during the following hours: Thursday, Nov. 9 from 7:00am to 5:00pm; Friday, Nov. 10 from 7:00am to 5:00pm; and Saturday, Nov. 11 from 7:00am to Noon.

**IEMSA MEMBERS:** Don't forget to join IEMSA or renew your membership. Conference registration member discount not allowed for non-active members. NON-Active Members taking the conference discount will be billed accordingly. Visit [www.iemsa.net](http://www.iemsa.net) and go to Membership for all the details.

> **CELL PHONES/PAGERS:** Out of courtesy for fellow attendees, it is requested that all cell phones and pagers be turned off during all sessions, the Awards Ceremony, and the Honoring Our Own Presentation.

> **BREAKS :** Coffee, tea and water will be available during registration. Two refreshment breaks will be provided on Friday and Saturday at no additional cost—served in the exhibit hall.

> **CONFERENCE HOTEL GROUP RATES :**  
—SEE PAGE 29 FOR DETAILS



# EDUCATION AFFORDABLE

Attending the IEMSA Conference is a great way to obtain affordable continuing education. IEMSA is diligent in its efforts to provide a conference that meets the needs of nursing, and all levels of EMS Providers. This year IEMSA appreciates the support of Eastern Iowa Community College, who makes continuing education possible at our conference. IEMSA is deeply committed to providing a conference that is timely and relevant to all levels of EMS providers, as well as our nursing partners.

## THIS IS HOW IT WORKS:

### > EMS CEs:

**EASTERN IOWA COMMUNITY COLLEGE** will award one continuing education hour (CE) of credit for each hour attended. CEs earned will be applicable for renewal of an Iowa EMS Provider certification—Core Topics are indicated on each class. IDPH/EMS Bureau Certification Renewal Guidance available at this link [https://idph.iowa.gov/Portals/1/userfiles/177/Iowa\\_EMS\\_Renewal\\_Guidance\\_Feb\\_2021.pdf](https://idph.iowa.gov/Portals/1/userfiles/177/Iowa_EMS_Renewal_Guidance_Feb_2021.pdf) and NREMT Renewal Guidance here—then click on your level of certification on the left menu: <https://www.nremt.org/EMT/Recertification>

Core Topics	EMR/FR	EMT/EMT-D	AEMT	Paramedic
Airway, Respirations, Ventilations	1	1	2	3
Cardiology	2	6	7	9
Trauma	1	2	3	3
Medical	3	6	8	9
Operations	1	5	5	6
<b>Totals</b>	<b>8</b>	<b>20</b>	<b>25</b>	<b>30</b>

### > NURSING CONTACT HOURS:

**IOWA NURSING CONTACT HOURS** are approved through Eastern Iowa Community College, Iowa Board of Nursing Approved Provider #8. **Topics approved for Nursing Contact Hours are designated on the brochure with an (N).**

### > CE/NURSING CONTACT HOUR PROCESS:

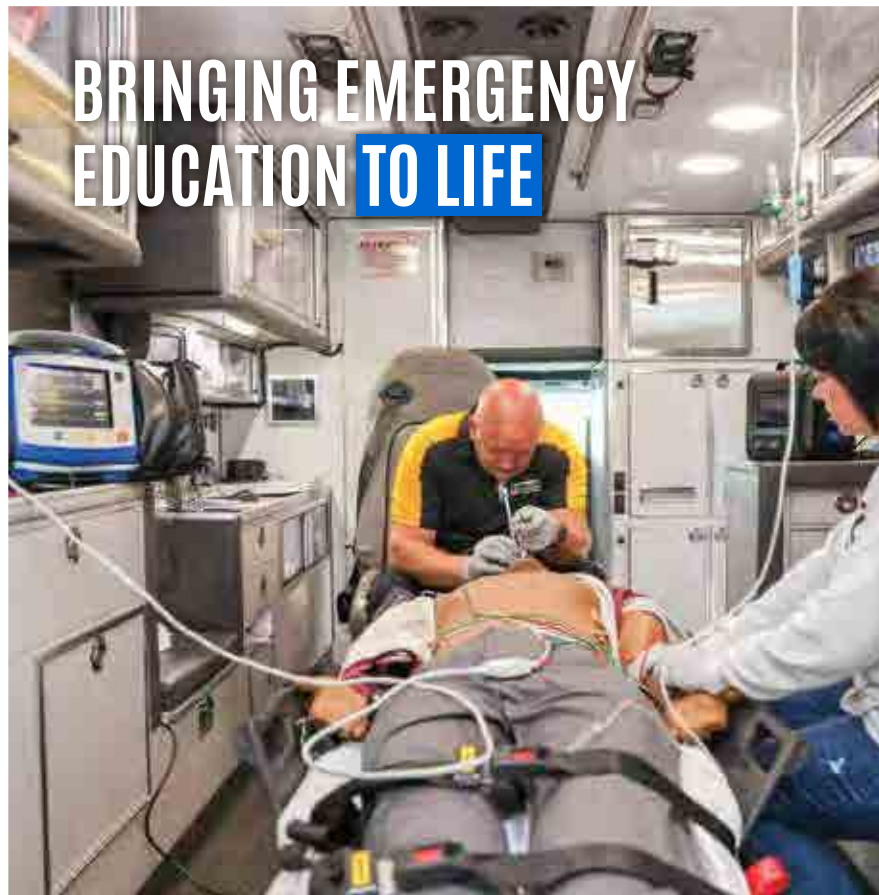
IEMSA PARTICIPANTS MUST BE PRE-REGISTERED TO INCLUDE NAME, LEVEL OF CERTIFICATION, CERTIFICATION NUMBER, AND BIRTHDATE (*necessary to avoid duplication in recording hours*). At check-in, the day of the conference, you will receive a nametag with a barcode. **In order to be awarded Contact Hours/CHs, each attendee must have their nametag barcode scanned after each presentation attended.** Your certificate will include Contact Hour and retention information.

### > AFTER THE CONFERENCE | WATCH YOUR EMAIL

After the conference, you will receive your "Certificate of Attendance" which will indicate all the CEH/Nursing Contact Hour detailed information, including **Iowa EMS sponsor number as designation of core topics as required by the state of Iowa.** **Before you can access your certificate**—the link will require you to take a quick post-conference survey. After the survey is complete—you will see a link to your certificate in the top left corner of your screen. Click that link—to show your certificate. You can then download, save, and/or print it.

29

## BRINGING EMERGENCY EDUCATION TO LIFE



### Education now available in your area!

Clinical simulations for:

- EMR, EMT, AEMT, Paramedic providers

We also provide education opportunities for:

- Staff development
- Community employers and partners

High, mid, and low-fidelity human patient simulators, including adult, pediatric, infant, and obstetrics.

Contact us to schedule a simulation:

→ [SIM-IA.UIOWA.EDU](https://sim-ia.uiowa.edu)

☎ 833-WE-SIM-IA (toll free)

✉ [sim-ia@uiowa.edu](mailto:sim-ia@uiowa.edu)

📍 University of Iowa College of Nursing  
50 Newton Road, Iowa City, IA 52245



Individuals with disabilities are encouraged to attend all University of Iowa-sponsored events. If you are a person with a disability who requires a reasonable accommodation in order to participate in this program, please contact SIM-IA in advance at 833-WE-SIM-IA.

The University of Iowa prohibits discrimination in employment, educational programs, and activities on the basis of race, creed, color, religion, national origin, age, sex, pregnancy (including childbirth and related conditions), disability, genetic information, status as a U.S. veteran, service in the U.S. military, sexual orientation, gender identity, or associational preferences. The university also affirms its commitment to providing equal opportunities and equal access to university facilities. For additional information on nondiscrimination policies, contact the Director, Office of Institutional Equity, the University of Iowa, 202 Jessup Hall, Iowa City, IA 52242-1316, 319-335-0705, [oi-e@uiowa.edu](mailto:oi-e@uiowa.edu).



# Our Name is on the Building!

At Foster Coach Sales, Inc., whatever product you purchase, you are supported by *our* family and *our* team of dedicated sales, service and support staff. That support is further enhanced by *our* first class on-site body shop and technicians. Since 1957, only one name has been on the building. *Our* name.

903 Prosperity Drive • Sterling, IL 61081  
1.800.369.4215 • [www.fostercoach.com](http://www.fostercoach.com)

We feature these industry-leading brands:



Check us out on Facebook®

Committed to providing the best emergency vehicles with the best service to our customers.

**REGISTER NOW!**

IEMSA > THE VOICE FOR POSITIVE CHANGE



IOWA EMERGENCY MEDICAL SERVICES ASSOCIATION



# IEMSA

## 33<sup>RD</sup> ANNUAL CONFERENCE & TRADE SHOW

IOWA EVENTS CENTER • DES MOINES, IA • NOVEMBER 9-11, 2023

## HOTEL & VENUES

**ONLINE RESERVATIONS** —To Reserve your room at our block rate online go to: [www.iemsa.net/conference.htm](http://www.iemsa.net/conference.htm) and click on the link in the right sidebar under "2023 Conference Hotels."

### HILTON DES MOINES

435 Park St., Des Moines

**(855) 271-3617**

Group Rate Discount  
Promo Code: IEMSA

Online Reservations Link:  
<https://book.passkey.com/go/IEMSA2023>

\$152/nt ++ double/single

Public Parking Rate is \$10/day located one block south at the corner of 5th Ave. and Watson Powell Jr. Way., or Hilton Self-Parking is \$18/nt.,

Discount Rate Closes October 30



### COMFORT INN & SUITES (previously Quality Inn)

929 3rd Street, Des Moines

**515-282-5251**

MUST ASK FOR IEMSA Group Room Block \$119+ tax/night for king/double

**ONLINE Reservation Link:**

<https://www.choicehotels.com/reservations/groups/ou16w0>

Discount Rate Ends: October 19  
Free Parking



### HOLIDAY INN

1050 Sixth Ave., Des Moines

**515-283-0151**

MUST ASK FOR IEMSA Group Room Block & Group Code: IEMSA for a discounted rate of \$111+ tax/night for single/double; \$111 King with Sofa

Free Parking, Free Event Center Dedicated Shuttle Service and includes breakfast (see reservation for details)



### VENUE: IOWA EVENTS CENTER

#### COMMUNITY CHOICE CREDIT UNION CONVENTION CENTER & HYVEE HALL C

730 3rd St,  
Des Moines, IA 50309



### IEMSA EXHIBIT HALL

#### HY-VEE HALL C

FEATURING:  
THE TOOLS OF YOUR TRADE

#### EXHIBIT HALL HOURS:

**THURS. NOV 9<sup>TH</sup>**

11:45- 6:30PM  
WELCOMING RECEPTION  
STARTS AT 4:30PM

**FRI. NOV 10<sup>TH</sup> : 9:15AM-4:00PM**

**SAT. NOV 11<sup>TH</sup> : CLOSED**

#### IEMSA CONFERENCE GIVE-AWAY WINNERS ANNOUNCED

DRAWING HELD ON THURSDAY  
OPENING RECEPTION AND DURING  
BREAKS FRIDAY. **MUST BE PRESENT  
TO WIN**







# PRE-CONFERENCE WORKSHOPS THURSDAY, NOVEMBER 9, 2023

## WORKSHOP DESCRIPTIONS/SPEAKERS

Approved EMS CEs and Nursing CHs are designated with the Core Topic and "EMS" and/or "N"

**AFFILIATE MEMBER BENEFIT:** Affiliate IEMSA Members (Services/Organizations) receive one-FREE Seat (1) AM 1/2 Day Workshop and (1) PM 1/2 Day Workshop **FROM THE SESSIONS ON THIS PAGE ONLY** -- Use Promo Code: **AFF-Leader23** at checkout (promo code good one-time for each Affiliate)

### 1/2 DAY PRE-CONFERENCE

#### INTRO/++REFRESHER EMS SERVICE/MEDICAL DIR. WORKSHOP

8:00AM - 11:45AM — **THURSDAY MORNING WORKSHOP**

—DR. AZEEMUDDIN AHMED

STATE MEDICAL DIRECTORY AND BEMTS REGULATORY STAFF

**\$60 MEMBER / \$90 NON-MEMBER**

[OPERATIONS] EMS

**Purpose:** This workshop is designed for **NEW Service/Medical Director**. This course provides a general overview of the role, duties, and responsibilities of the EMS Physician Medical Director and Service Director. It is intended for new EMS leaders or those who aspire to become a leader in their organization, or who desire a review of the essentials of leading an EMS agency.

#### Objectives:

- Introduce Bureau Staff
- Discuss duties and responsibilities of the Physician Medical Director and Service Director
- Review regulatory requirements of EMS services
- Identify resources available to Physician Medical Directors and Service Directors

### 1/2 DAY PRE-CONFERENCE

#### REFRESHER : EMS SERVICE/MEDICAL DIR. WORKSHOP

1:00 PM - 4:30 PM — **THURSDAY AFTERNOON WORKSHOP**

—DR. AZEEMUDDIN AHMED

STATE MEDICAL DIRECTORY AND BEMTS REGULATORY STAFF

**\$60 MEMBER / \$90 NON-MEMBER**

[OPERATIONS] EMS

**Purpose:** This course is a **DEEP-DIVE Course for the seasoned/eteran Service/Medical Director**. This course provides a review of the roles and responsibilities of the EMS Physician Medical Director and Service Director, including a refresher on the essential regulatory responsibilities of an EMS service. We will take a deeper dive into specific topics of interest in the ever-changing landscape of EMS. This course is intended for more experienced physician medical directors and service directors, but all EMS leaders and aspiring leaders are welcome to attend.

#### Objectives:

- Introduce Bureau staff
- Review roles and responsibilities of EMS Physician Medical Director and Service Director
- Discuss the benefits of collaboration to develop strong EMS systems
- Explain the intent and value of Continuous Quality Improvement (CQI) programs
- Investigate ways to use data to drive improvements to EMS systems
- Discuss various hot topics in EMS

### 1/2 DAY PRE-CONFERENCE

#### STRONGER THAN THE STORM: IT'S OKAY TO NOT BE OKAY.

8:00 AM - 11:45 AM — **THURSDAY MORNING WORKSHOP**

—PRESENTED BY DAVID + CHRISTIE DYKE

FIF/SIOUX CITY FIRE RESCUE, NREMT-P, PEER SUPPORT TEAM LEADER, CISM TEAM MEMBER

**\$60 MEMBER / \$90 NON-MEMBER**

[MEDICAL] EMS/3.5 N/3.5

We will share our experiences with Post Traumatic Stress Disorder leading to suicidal thoughts and planning of the same, dealing with trauma, the culture of mental health, the near demise of their marriage, and how together they survived the storm. Their story is emotional, it is straight from the heart, and it is raw.

- Recognize challenges faced by families affected by PTSD, depression, and anxiety.
- To understand that PTSD not only affects those who experience it but also impacts their loved ones, friends, and family.
- Recognize that it is okay to not be okay but it is not okay to not do anything about it.
- Understand the importance of early recognition and interventions in dealing with one's health and wellness.

### 1/2 DAY PRE-CONFERENCE

#### EMERGENCY RESPONSE TO COMPLEX OUTDOOR INCIDENTS & HUNTING EMERGENCIES

12:45 PM - 4:30 PM — **THURSDAY AFTERNOON WORKSHOP**

—DIRK CHRISTIAN EMT, FF, PLANNING & MITIGATION BUREAU DIRECTOR (KS)

**\$60 MEMBER / \$90 NON-MEMBER**

[TRAUMA] - EMS/3.5 N/3.5

In the 2019 season, 8 Kansas hunters were accidentally shot while they were out hunting. The US Fish and Wildlife Service reports that Kansas hunters spend a total of 5 million cumulative hunting days in the field each year. While these emergencies are 'low frequency', they can be extremely complex and 'high risk' in nature. Are you trained and ready to respond to complex outdoor emergencies? Does your fire department train for rescue operations in the most remote areas of your district? This course will better prepare Firefighters to assess, rescue, and treat injured hunters and patients in the remote outdoors. During this class, we will review rapid trauma assessment and treatment for myriad of GSW's, puncture and penetrating wounds, arrow and broadhead injuries, cold water emergencies and hypothermia, and multisystem trauma injuries related to hunting and outdoor emergencies. In-depth discussion will include use of common and specialized rescue equipment, and several different techniques to rescue hunters from a variety of tree stands, tree climbing rigs, elevated and ground blinds, falls – including hunting harnesses and suspension injuries, archery and arrow injuries, and a wide variety of traumatic injuries commonly associated with hunting, trapping, and outdoors sporting events.





# THURSDAY, NOVEMBER 9, 2023

## WORKSHOP DESCRIPTIONS/SPEAKERS

Approved EMS CEs and Nursing CHs are designated with the Core Topic and "EMS" and/or "N"

### FULL DAY : PRE-CONFERENCE CRITICAL CARE WORKSHOP

8:00 AM - 4:30 PM

\$120 MEMBER / \$160 NON-MEMBER

8:00 AM - 9:15 AM

#### TAKE MY BREATH AWAY: BASIC VENTILATOR MANAGEMENT [ARV] EMS/1.5 N/1.0

JANET TAYLOR-CCEMT-P, CEN, CFRN  
Good ventilator management can make a difference with a patient based on your critical thinking skills and vent settings. Every vent is basically the same, but some have more bells and whistles than others. The main goal is to mimic the patient's own respiratory function for his/her condition to improve ventilation and perfusion and decrease ICU/ventilator days. Why would you want to increase the minute volume on an acidic patient? Why doesn't an increase in FI02 always improve SpO2? Based on which version you chose for your participants will decide on how in depth we can get with vent management. Many of the major brands of vents will be represented here so we can see just how "easy" it can be.

9:15 AM - 10:15 AM

#### UNDER PRESSURE: HEMODYNAMIC MONITORING

[CARDIO] EMS/1.0 N/1.0 —JANET TAYLOR-CCEMT-P, CEN, CFRN  
Swan Ganz, Art Lines and CVP monitors aren't commonly seen in EMS transport but when doing critical care, it is expected that we know what to do and how to interpret the numbers to ensure quality patient care. In this presentation, we will go over the parameters of each item, including having hands-on sessions with actual Swan Ganz catheters, Art Lines, and CVP monitors to help you get an understanding of how to maintain the equipment and use the data for patient care.

10:30 AM - 11:45 AM

#### DELAYED SEQUENCE INTUBATION

[ARV] EMS/1.5 N/1.0 —JOHNATHAN COCKRELL-NRP, FP-C, M ED  
This course will discuss the stabilization of patients before and during medication assisted intubation procedures.

11:45 AM - 12:45 PM  
SURVIVING SEPSIS

[MEDICAL] EMS/1.0 + N/1.0 —CHARLES E. GIPSON-MA, NRP / CCP  
This session will take a deep dive into the world of patients who have severe infections called sepsis that progress into septic shock. We will look at the signs and symptoms of sepsis, discuss the importance of efficient treatment of sepsis and create care plans for sepsis. Even though sepsis is critical it is survivable with prehospital intervention.

2:00 PM -- 3:00 PM

#### AIRWAY EXTRAVAGANZA SURGICAL CRICOTHYROTOMY

[ARV] EMS/1.0 + N/1.0 —MELVIN DONALDSON-MD, PHD  
The unanticipated difficult airway can be one of your most memorable responses, for all the wrong reasons. This session will help lessen some of that angst by discussing how to recognize and manage the difficult airway, even to the point of the surgical cricothyrotomy. We will review the signs of airway compromise, especially those found with upper airway obstruction including FBAO. While choosing which airway strategy or adjunct is appropriate, this session will lay out contraindications to traditional adjuncts, leaving you no choice but the surgical cric. Now that you have made the decision to use a surgical option, we will review some immediate and long-term complications. In the right situation, the surgical airway is a viable option to make the response a memorable one, for the right and successful reasons.

3:30 PM - 4:30 PM

#### LVADS

[CARDIO] EMS/1.0 + N/1.0 —MELVIN DONALDSON-MD, PHD  
Rolling up to a very sick patient with an LVAD can be a bit stressful, especially if you aren't familiar with them. This session outlines some assessment parameters, from LVAD specific causes of shock to the troubleshooting of an LVAD malfunction. Through discussion and interaction, you may just become more comfortable and confident with the LVAD patient in extremis.

### FULL-DAY PRE-CONFERENCE SKILLS RODEO : HANDS-ON SKILLS CHALLENGE

8:00 AM - 4:30 PM

LIMITED TO 25 ATTENDEES.

\$120 MEMBER / \$160 NON-MEMBER

{OPERATIONS} EMS/8.0 N/7.5

—PRESENTED BY LUCAS GOODIN, NRP ED; JASON DUSH, F F, NR / CC EMT - P, FP - C; DILLON NEWSOM; LAURA SELLS

This class is designed to give you an opportunity to apply all the assessments and skills needed to manage your trauma and medical patients. This is an all day class and attendance for the whole day is required. Throughout the day you will be rotating between different stations that are designed to challenge you while working in the controlled environment.

### 1/2 DAY PRE-CONFERENCE "A LITTLE BIT OF THIS + THAT" WORKSHOP

12:45 PM - 4:30 PM —THURSDAY AFTERNOON WORKSHOP

\$60 MEMBER / \$90 NON-MEMBER

12:45 PM - 1:45 PM

#### STRATEGIES TO ENHANCE SUCCESS IN EMS EDUCATION

[OPERATIONS] EMS/1.0 N/No CH's —JOHNATHAN COCKRELL-NRP, FP-C, M ED  
This course is for EMS instructors or training officers, and will explore evidence-based practices that can be used to enhance learning and help improve student outcomes.

2:00 PM -- 3:00 PM

#### CLUE ME IN: CRITICAL THINKING SKILLS FOR BLS

[MEDICAL] EMS/1.0 N/1.0

—JANET TAYLOR-CCEMT-P, CEN, CFRN

Using your critical care thinking to figure out what isn't typically "textbook" is a skill that requires practice. Depending on what types of calls you may or may not have an opportunity to practice the critical thinking. In this course, we will look at some actual calls that didn't present as it could have.

3:30 PM - 4:30 PM

#### THE RED CAR CONUNDRUM – 12 LEAD EKG

[CARDIO] EMS/1.0 N/1.0

—JAMIE TEMPLE -BA, NPR, CCP

If local law enforcement announced a new strategy to curb speeding along a particular stretch of roadway by ONLY looking for and pulling over red cars, would you think that was a sound strategy? Most of us would agree that we would catch some speeders, but many more would go on speeding and putting the public at risk. EMS has basically employed the same strategy with 12 Lead EKG interpretation. We are looking for ST segment elevation so that we can call that ever-popular STEMI alert! Congratulations, you pulled over the red car. However, what if a white, black, or gray car was speeding past and nobody noticed? This session will introduce and discuss some additional items and patterns that we need to recognize in an effort to more effectively police the 12 Lead landscape. The eye does not see what the mind does not know.



# THURSDAY, NOVEMBER 9, 2023

## WORKSHOP DESCRIPTIONS/SPEAKERS

Approved EMS CEs and Nursing CHs are designated with the Core Topic and "EMS" and/or "N"

### FULL DAY : PRE-CONFERENCE EMS HONOR GUARD CLINIC

8:00 AM - 4:30 PM -- {NO CEs and NO CHs}

FREE TO ALL IOWA EMS SERVICES/PROVIDERS

—PRESENTED BY K DOC PATTERSON—FIRE SERVICE INSTRUCTOR

An Honor Guard requires practice and precision so an attempt to honor doesn't look sloppy and unorganized and result in dishonor. The honor guard clinic focuses on the basics and advanced classes. Attending the clinic as a multi-agency or countywide service, EMS, Emergency Responders & Dispatchers, make their best even better, and build a resource network. The Honor Guard Training Instructor will teach basic drill and ceremony, with an emphasis on casket details and flag etiquette. The honor guard clinic's mission is to instill the knowledge, tradition, vision, and skills necessary to execute the duties and responsibilities associated with Honor Guard details.

#### Our Honor Guard Clinic provides:

- Basic guidance for the standardization of training methods;
- Instruction in proper drill movement and techniques;
- Leadership enhancement;
- Team confidence building.

#### The course covers the following topics:

- Basic drill and ceremonial movements;
- Religious and casket protocol;
- Developing department SOPs for honor guards and color guards;
- Public Safety Officer benefits;
- Flag etiquette;
- Honor Guard Commander leadership training;
- Various types of funeral services;
- Honor Guard and Color Guard history and traditions.
- Skill Testing Drill Down®
- Silent Guard Ceremonial

## Join the Team!

Be a part of the fastest growing medical transportation company in the region. Midwest Medical is seeking to hire people who share our energy, enthusiasm and commitment to the highest level of patient care.

#### See current openings in your area like:

- Emergency Medical Technicians (EMTs)
- Paramedics
- Station Managers
- Fleet Maintenance
- Dispatchers
- Flight Medics
- Flight Nurses
- Pilots

THIS COULD BE  
YOU!



**APPLY NOW!**  
midwest-med.com/careers  
For more info: 833.526.5319  
joinourteam@mwmmtc.com



**MMT Ambulance**  
Medicine in Motion

833.526.5319 · midwest-med.com



# FRIDAY : DAY 1—NOVEMBER 10, 2023

## COURSE DESCRIPTIONS/SPEAKERS

Approved EMS CE and Nursing CHs are designated with the Core Topic and "EMS" and/or "N"

### KEYNOTE SESSION 7:45 AM - 9:00 AM



#### SERVING WITH A PURPOSE —JASON DUSH - FF, NR /CC EMT-P, F -C

[OPERATIONS] EMS (NO CE) + N (NO CH) : Too many times we find ourselves wondering why we got into our professions and what we want to get out of it. In our personal and professional journeys, we have to identify and execute our purpose. Jason will discuss the tools needed to have a successful life and career based on our inner purpose.

### TRACK 1 BREAK-OUTS : BLS

9:45 AM - 10:45 AM

#### ABC'S OF CRITICAL THINKING AND PATIENT MANAGEMENT FOR BLS/ALS PROVIDER

—JASON DUSH - FF, NR/CC EMT-P, F -C

[MEDICAL] EMS/1.0 + N/1.0

Critical thinking in medicine requires using logic to understand medical problems and make reasonable decisions in patient management. Have you had that patient that stumped you or made you really think? Have you had that call where your patient assessment and management flow didn't go so well because you didn't know where to start with treatment priorities? Jason will break down and simplify the ABC's and D of patient assessment, management, and treatment priorities. This fun and exciting class will have you walking away feeling more comfortable, confident and competent with your critical thinking and patient management skills.

10:50 AM - 11:50 PM

#### THE FINAL CUT: FIELD AMPUTATIONS

—JANET TAYLOR - CCEMT-P, CEN, CFRN

[TRAUMA] EMS/1.0 + N/1.0

While being faced with doing a field amputation is considered rare, caring for a patient who has already cut off a limb in an accident is common and most of us have a couple of these types of calls under our belt already. We will review ALL aspects of an amputation including mechanism of injury, recovering a limb, partial versus complete amputations, and what criteria is considered IF you were, in fact, faced with the possibility of doing the amputation yourself.

12:50 PM - 1:50 PM

#### OBSTETRIC CARE FOR EMS

— SUZANNE BELLINGER - DNP, RNC-OB, C-EFM

[MEDICAL] EMS/1.0 + N/1.0

This course will assist in preparing EMS personnel on the care and management of the pregnant or newly delivered woman, her newborn, as well as the care of a woman experiencing pregnancy loss or miscarriage. It will also touch on obstetric emergencies and maternal mortality and morbidity in the United States.

2:00 PM - 3:00 PM

#### "CATH-LAB, TABLE FOR ONE" — THE IMPORTANCE OF BEING GOOD AT BLS 12 LEAD

—JAMIE TEMPLE - BA, NPR, CCP

[CARDIO] EMS/1.0 + N/1.0

A number of states have added some tools to the EMT's toolbox. Although not a super-new add in Iowa, the "acquisition and transmission" of a 12 lead EKG can really make a difference in outcomes of those patients in desperate need of a cath lab intervention. This session will shed some light on the When, How and Why of 12 Lead for the EMT. Everyone knows - "If you want a table at the best restaurant, you've gotta' call ahead."

35

### Save and Heal More Lives

Implement an agency protocol to call Iowa Donor Network at every death. Each call has the potential to save or heal hundreds of lives through tissue and eye donation.

Email IDN to schedule a FREE CEH course to learn more:

[contact@idn.org](mailto:contact@idn.org)

"Our lives were shattered on October 11, 2018, when our daughter Amanda passed away instantly in a traffic accident. I found out that evening that Amanda was a registered organ, eye and tissue donor. The magnitude of her personal decision was beyond anything I could have comprehended. Amanda helped 249 people with her gifts, two of which can see the beautiful world we live in because of her cornea donations."

-Jeanine Flies, Donor Mom







**FRIDAY : DAY 1—NOVEMBER 10, 2023**

**COURSE DESCRIPTIONS/SPEAKERS—CONTINUED**

## TRACK 2 BREAK-OUTS : PEDIATRIC

9:45 AM - 10:45 AM

### CHILD PASSENGER SAFETY: KEEPING KIDS SAFE ONE CAR SEAT AT A TIME

—JANNA DAY - LPN, MPH, CPSTI

[TRAUMA] EMS/1.0 + N/1.0

Correct use of child safety seats prevents injury and saves lives. Learn about Iowa's child passenger safety law, best practice guidelines, and proper child safety seat use.

10:50 AM - 11:50 PM

### PEDIATRIC ANAPHYLAXIS AND SEIZURES

—BECCI MEREDITH - MSN, RN, CCRN, C-NPT

[MEDICAL] EMS/1.0 + N/1.0

Pediatric Anaphylaxis and Seizures: Severe allergic reactions and seizures are some of the most common pediatric EMS emergencies. Explore etiology and EMS management of these medical emergencies. Content will be enhanced with case study presentation.

12:50 PM - 1:50 PM

### NEONATAL RESUSCITATION MADE EASY

—LUCAS GOODIN-AICP, CCP, NRP

[MEDICAL] EMS/1.0 + N/1.0

Neonatal care tends to take us out of our comfort zone. These high stress environments can make a simple task difficult to perform. We will go through the steps needed to increase your confidence and help you provide the best possible care.

2:00 PM - 3:00 PM

### MOMMA-MY HEAD REALLY HURTS

—DEB VON SEGGERN-JOHNSON - NRP, EMSI

[TRAUMA] EMS/1.0 + N/1.0

My Grandma literally told me when I was young and had hit my head on something - "Your Fine - the bump is on the outside of your head!" or "It's a long way from your Heart!". You WILL Live! Love Grandma dearly BUT, I have come to discover she was wrong - gulp!! We need to take these "bumps" more seriously. In this session, we will explore pediatric TBI and what you need to know.

## TRACK 3 BREAK-OUTS : HARD-TO-FIND

9:45 AM - 10:45 AM

### ADDICTION, STIGMA, & BARRIERS TO CARE: WE'RE HERE TO HELP

—HALEY PEDERSON HUNDLEY - PREVENTION MANAGER; CPS

[MEDICAL] EMS/1.0 + N/1.0

Why do we see the same folks that use substances over and over? Why can't they stay "clean?" In this session, participants will explore the cycle of addiction and recovery and how stigma associated with substance use plays a substantial role in preventing folks from seeking help. Last, we'll apply this information to everyday interactions with folks that use substances in our work.

10:50 AM - 11:50 PM

### TRICK OR TREAT: ALL THOSE PRECIOUS TREATS OUR PTS HAND OUT TO SEPSIS

—DEB VON SEGGERN-JOHNSON - NRP, EMSI

[MEDICAL] EMS/1.0 + N/1.0

Did you know over 250,000 Americans die from sepsis every year? 1 in 3 patients that die in a hospital have sepsis! How many of you use anti-bacterial items? Do you think you are prepared for everything contagious and infectious? Infectious diseases kill more people worldwide than any other single cause!

12:50 PM - 1:50 PM

### ALL SHOOK UP—SEIZURES

—DEB VON SEGGERN-JOHNSON - NRP, EMSI

[MEDICAL] EMS/1.0 + N/1.0

Seizures are among the earliest known and still least understood afflictions. They herald dozens of abnormalities, ranging from head injury to hypoxia and from epilepsy to hypoglycemia. During this session we will discuss the causes and care that needs to be rendered to seizure patients and fainting goats.

2:00 PM - 3:00 PM

### THE ISICS PLATFORM : HISTORY, STRUCTURE, HOW AND WHEN TO USE

—HALEY NICHOLS - STATEWIDE INTEROPERABILITY COORDINATOR

[OPERATIONS] EMS/1.0 + N/1.0

The events of Sept. 11, 2001 proved the important nature of interoperability between emergency responders. Interoperability means that responders can communicate and exchange critical information in all situations and across jurisdictions. This course will introduce you to Iowa's answer - the Statewide Interoperability Communications System and the ways in which it can work for you in an emergency event.

**BETTER DECISIONS IN REAL-TIME.**

**ESO ELECTRONIC HEALTH RECORD**

At ESO, we're more than just a vendor. We know what it takes to empower and transform the EMS profession. That's why we designed the ESO Electronic Health Record (EHR) the way we did: Intuitive, simple, and efficient, so you can move from incident to signature quickly while capturing the correct information every time.

**eso**

[LEARN MORE AT ESO.COM](https://www.eso.com)


**FRIDAY : DAY 1—NOVEMBER 10, 2023** COURSE DESCRIPTIONS/SPEAKERS—**CONTINUED**
**TRACK 4 BREAK-OUTS : ALS**

9:45 AM - 10:45 PM

**CAPNOGRAPHY IN THE ALS SETTING**

—DYLAN NEWSOM

[ARV] EMS/1.0 + N/1.0

Establishing relevance of ETCO<sub>2</sub> in the ALS setting. Learning to use ETCO<sub>2</sub> as a diagnostic tool to better treat patients at the ALS level and comparing different diagnoses with case reviews.

10:50 PM - 11:50 PM

**RUSH HOUR IT'S NOT JUST THE TRAFFIC:  
HUMAN SEX TRAFFICKING**

—JASON DUSH - FF, NR /CC EMT-P, FP-C

[OPERATIONS] EMS/1.0 + N/1.0

Human trafficking is modern day slavery for labor and sex. Public servants working on the front lines are in a place to recognize and report human trafficking. Almost everyone of us have managed a patient who was trafficked for sex or labor and never knew it. As public servants we must advocate for these victims and be better educated, equipped and prepared to recognize and manage them while in our care. This lecture will open your eyes to the reality of the prevalence of human trafficking in our communities. Jason will pull no punches at bringing the real world of human trafficking to the classroom.

12:50 PM - 1:50 PM

**STROKE, WHICH STROKE SCALE?**

—DYLAN NEWSOM

[MEDICAL] EMS/1.0 + N/1.0

Overview of stroke scales and how to identify a large vessel occlusion. The importance of understanding stroke scale and transport to the correct stroke facility.

2:00 PM - 3:00 PM

**COMBATING THE HIDDEN DANGERS OF SHOCK IN TRAUMA**

—AJ HEIGHTMAN - MPA, EMT-P

[TRAUMA] EMS/1.0 + N/1.0

**SPONSORED BY IOWA ASSOCIATION OF AIR MEDICAL SERVICES**

This presentation will take a deep dive into the prehospital assessment & management of hemorrhagic shock and its underlying causes. A.J. will review the areas of a trauma patient where blood can "hide" and exsanguinate a patient such as a flail chest, tension pneumothorax, femur fractures, and pelvic injuries. Cadaver videos will give the attendee an "inside" look at the human body and its amazing (and dangerous) capability to hide blood and cause patients to die. Attendees will learn key assessment and treatment tips that will help them defeat the grim reaper of shock.

**KEYNOTE SESSION** 3:45 PM - 5:00 PM

**FIELD AMPUTATIONS**

—AZEEMUDDIN AHMED-MD, MBA PATRICK MCGONAGILL MD; CHUCK GIPSON MA, NRP/CCP; KEITH SCHNECKLOTH NREMT

[TRAUMA] EMS/1.0 + N/1.0 This session will review a trauma call resulting in a field amputation of a trapped patient. This session will review the decision making process to implement and activate a field amputation team, review of a field amputation protocol and review of follow up care to the patient. Presentation will be made by the providers involved in the rescue and care as a panel presentation.



SPONSORED BY

**One Billing Solutions**

YOUR ONE STOP SOLUTION, FOR MEDICAL + FIRE BILLING





# SATURDAY : DAY 2—NOVEMBER 11, 2023

## COURSE DESCRIPTIONS/SPEAKERS

Approved EMS CEs and Nursing CHs are designated with the Core Topic and "EMS" and/or "N"

### KEYNOTE SESSION 8:25 AM - 9:25 AM



#### THE MENDON AMTRAK CRASH - MCI LESSONS FOR THE RURAL CLINICIAN [OPERATIONS] EMS/1.0 + N (NO CHs)

—JOSHUA STILLEY, MD

When a passenger train derailed in rural northwest Missouri, a coordinated EMS and fire response was essential to taking care of the injured. Unique elements of the rural location both aided in and hampered response efforts. This presentation will cover successes as well as lessons learned.

### TRACK 1 BREAK-OUTS : BLS

9:55 AM - 10:55 AM

#### I AM FEELING REALLY - REALLY STRANGE

—DEB VON SEGGERN-JOHNSON - NRP, EMSI

[MEDICAL] EMS/1.0 + N/1.0

Stroke is the 5th leading cause of death, yet we miss the symptoms often in the field when our patient are experiencing one. The brain is an extremely complex organ that controls various body functions. If a stroke occurs and blood flow cannot reach the region that controls a particular body function that part of the body will not work, as it is suppose too. What can we do? What should we do? What is important?

11:05 AM - 12:05 PM

#### MENTAL HEALTH JOURNEY FROM A PATIENTS PERSPECTIVE

— LUCAS GOODIN - NRP, ED, IST

[MEDICAL] EMS/1.0 + N/1.0

We will walk through a few different cases through the eyes of a patient. Giving you a different perspective on what has become a routine call. How can we best serve them in their time of need?

1:05 PM - 2:20 PM

#### ANAPHYLAXIS!

—KYLE BEALE-MCDONALD - NRP CCP

[MEDICAL] EMS/1.5 + N/1.0

We will cover in detail the allergen cascade to better grasp what bodies go through during an allergic reaction. We will learn about appropriate treatment and recognition.

2:30 PM - 3:45 PM

#### BAM! BASIC AIRWAY MANAGEMENT

—KATIE DUMERMUTH - B.A., B.A., NREMT-PM, CCP

[ARV] EMS/1.5 + N/1.0

A short review of the adult and pediatric airway anatomy. Followed by a review of basic airway adjuncts. Then working through some case scenarios to help identify which airway adjunct to use and when to progress to more advanced airway management.

### TRACK 2 BREAK-OUTS : PEDIATRIC

9:55 AM - 10:55 AM

#### THE MEDICALLY COMPLEX CHILD

—ERIK ADAIR, DO, FAAP - DO, FAAP

[MEDICAL] EMS/1.0 + N/1.0

Children with medical complexity have extensive needs for health services and can be high resource utilizers. In this section we will look at the medically complex child and the common difficulties in management. We will discuss some management strategies for success, with an emphasis on the technology dependent child.

11:05 AM - 12:05 PM

#### ALL THAT WHEEZES

—ERIK ADAIR, DO, FAAP - DO, FAAP

[ARV] EMS/1.0 + N/1.0

Respiratory distress is one of the most common complaints for the pediatric patient. In this session we will discuss many common causes of pediatric respiratory distress and explore treatment strategies for them.

1:05 PM - 2:20 PM

#### PEDIATRIC CARDIAC ARREST

—BECCI MEREDITH - MSN, RN, CCRN, C-NPT

[CARDIO] EMS/1.5 + N/1.0

Pediatric cardiac arrest is one of the most dreaded EMS calls. This course will review pediatric cardiac arrest for both BLS and ALS providers. Information will focus on pediatric differences and care tips.

2:30 PM - 3:45 PM

#### CHILD ABUSE

—KRISTEN FOSTER - BSN, RN, CCRN

[TRAUMA] EMS/1.5 + N/1.0

This important session will focus on our role in the protection of children. We will examine common findings in the abused child, paying special attention to abusive head injuries and the findings that should make us uncomfortable and concerned. We will also look at how the investigative process works and the "what's next" when you make a notification.





## TRACK 3 BREAK-OUTS : **HARD-TO-FIND**

9:55 AM - 10:55 AM

### **MOBILE INTEGRATED HEALTH/COMMUNITY PARAMEDICINE: WHY “YOU CALL, WE HAUL, THAT’S ALL” IS SO 1970’S...**

— THOMAS DEAN STRIEGEL - DO, FACEP, FAAEM +  
FIONA JOHNSON - DO, FACEP, FAAEM

[OPERATIONS] EMS/1.0 + N/1.0

This session will shed some light on one of the more popular topics of the day: Mobile Integrated Healthcare, aka Community Paramedicine. We will examine the most common missions of MIHC, and discuss key components in the development of a MIHC program. This program is a big part of the future, as EMS as we know it is changing. As the saying goes, “Get going or get out of the way”. MIHC is one of the vehicles that is moving quickly down the highway; time for EMS to get in!

11:05 AM - 12:05 PM

### **THE INCREDIBLE HULK!**

—DEB VON SEGGERN-JOHNSON - NRP, EMSI

[MEDICAL] EMS/1.0 + N/1.0

Have you ever encounter a patient that is extremely excited and wound tighter than a drum? He is being destructive or acting bizarre. Nothing you do is working to calm him down. Then all of a sudden, he drops to the ground – he is out cold and he is not breathing and has no pulse.

**This presentation contains Rated “R” material. Videos contain nudity and foul language.**

1:05 PM - 2:20 PM

### **IMPROVING YOUR PUBLIC IMAGE**

— AJ HEIGHTMAN - MPA, EMT-P

EMS/NO CEs + N/NO CHs

**SPONSORED BY IOWA ASSOCIATION OF AIR MEDICAL SERVICES**

EMS personnel often fail to realize that the uniforms they wear and the vehicles they drive serve as billboards in the eyes of the community.

2:30 PM - 3:45 PM

### **STEP AWAY FROM THE LIGHT**

—JAMIE TEMPLE - BA, NRP, CCP

[CARDIO] EMS/1.5 + N/1.0

Most of us have been involved in a cardiac arrest somewhere in our careers. Fortunately, very few of us can say they were the cardiac arrest patient! That’s right; I was the cardiac arrest patient! We train and drill to ensure we are skilled at handling the operations of cardiac arrest care. We rarely, if at all, educate or enlighten our troops on the patient side of the call. This session will focus on the personal side of what we do. This fun and lively presentation takes the audience on a wild rollercoaster ride of emotions from the patient, family, caregiver’s, and friend’s perspectives. Learn a bit about cardiac arrest management and maybe even more about yourself by attending this affective-centered presentation.

## TRACK 4 BREAK-OUTS : **ALS**

9:55 AM - 10:55 AM

### **TOXICOLOGY: COMMON DRUG OVERDOSES**

—HOLLY RANDLEMAN - PHARMD

[MEDICAL] EMS/1.0 + N/1.0

In this session, participants will become familiar with toxicological emergencies. The diagnosis and management of common prescription and illicit drug overdoses will be discussed. History taking, specific antidotes and supportive care of the overdosed patient will be reviewed.

11:05 AM - 12:05 PM

### **WATER RELATED INJURIES**

—JOSHUA STILLEY, MD

[TRAUMA] EMS/1.0 + N/1.0

Water related injuries are incredibly common, affecting thousands of people in the US each year. This presentation will provide updated information on nomenclature, injuries, and treatment for the victims of water related accidents.

1:05 PM - 2:20 PM

### **TRAUMA TACTICS**

—LUCAS GOODIN - FIRE CHIEF, EMERGENCY MANAGEMENT DIRECTOR, MEDICAL DIRECTOR, AICP, CCP, NRP

[TRAUMA] EMS/1.5 + N/1.0

Whether it’s in the streets or the pharmacy, we are in contact with hundreds of different drugs in our career. We will discuss drug classes and the effects it has on our body. We will discuss common antidotes or treats to mitigate harmful side effects or adverse reactions.

:30 PM - 3:45 PM

### **TOXICOLOGY**

—KYLE BEALE-MCDONALD - NRP CCP

[MEDICAL] EMS/1.5 + N/1.0

Whether it’s in the streets or the pharmacy, we are in contact with hundreds of different drugs in our career. We will discuss drug classes and the effects it has on our body. We will discuss common antidotes or treats to mitigate harmful side effects or adverse reactions.

## KEYNOTE SESSION 4:00PM - 5:00 PM

**SPONSORED BY**

IOWA ASSOCIATION OF  
AIR MEDICAL SERVICES

### **CHALLENGING YOUR CLINICAL BOUNDARIES** [MEDICAL] EMS/1.0 + N/1.0 — AJ HEIGHTMAN - MPA, EMT-P

The delivery of out-of-hospital emergency medical care is constantly evolving, with EMS personnel continually being called on to deliver more advanced care. But what are our weak spots and where is the delivery of prehospital care headed in the future? From enhance resuscitation and transportation practices to delivery of EMS by drones, join JEMS Editor-Emeritus A.J. Heightman as he looks in his management, operations and clinical crystal ball and presents his vision of our future.



# FRIDAY NOVEMBER 10, 2023 SCHEDULE AT-A-GLANCE PLANNER

Approved EMS CE and Nursing CHs are designated with the Core Topic and "EMS" and/or "N"

6:45 AM REGISTRATION OPENS

7:45 AM - 9:00 AM — KEYNOTE SESSION **BALLROOM**

**SERVING WITH A PURPOSE** — JASON DUSH - FF, NR /CC EMT-P, F -C [OPERATIONS] NO CE + NO CH

9:00 AM - 9:45 PM

- **BREAK IN THE EXHIBIT HALL** — **HYVEE HALL C**  
**Give-Away Drawings Continue** and Refreshments and a treat will be served in the exhibit hall for this break.
- **YOUR CHANCE TO DROP OFF YOUR RAFFLE TICKET**  
"DROP OFF YOUR RAFFLE ENTRY CARDS IN THE RAFFLE BAG AT THE IEMSA BOOTH #65 IN THE EXHIBIT HALL."

9:45 AM - 10:45 AM

- **ABC'S OF CRITICAL THINKING AND PATIENT MANAGEMENT FOR BLS/ALS PROVIDER**  
— JASON DUSH - FF, NR/CC EMT-P, F -C  
[MEDICAL] EMS/1.0 + N/1.0
- **CHILD PASSENGER SAFETY: KEEPING KIDS SAFE ONE CAR SEAT AT A TIME** — JANNA DAY - LPN, MPH, CPSTI  
[TRAUMA] EMS/1.0 + N/1.0
- **ADDICTION, STIGMA, & BARRIERS TO CARE: WE'RE HERE TO HELP**  
— HALEY PEDERSON HUNDLEY - PREVENTION MANAGER; CPS  
[MEDICAL] EMS/1.0 + N/1.0
- **CAPNOGRAPHY IN THE ALS SETTING**  
— DYLAN NEWSOM [ARV] EMS/1.0 + N/1.0

10:50 AM - 11:50 AM

- **THE FINAL CUT: FIELD AMPUTATIONS**  
— JANET TAYLOR - CCEMT-P, CEN, CFRN  
[TRAUMA] EMS/1.0 + N/1.0
- **PEDIATRIC ANAPHYLAXIS AND SEIZURES**  
— BECCI MEREDITH - MSN, RN, CCRN, C-NPT  
[MEDICAL] EMS/1.0 + N/1.0
- **TRICK OR TREAT-- ALL THOSE PRECIOUS TREATS OUR PTS HAND OUT TO SEPSIS** — DEB VON SEGGERN - NRP, EMSI  
[MEDICAL] EMS/1.0 + N/1.0
- **RUSH HOUR IT'S NOT JUST THE TRAFFIC: HUMAN SEX TRAFFICKING** — JASON DUSH - FF, NR /CC EMT-P, FP-C  
[OPERATIONS] EMS/1.0 + N/1.0

11:50 AM - 12:50 PM

- **Lunch is also available at the FOOD VENDORS (BBQ and Mexican Concession Stand) IN THE EXHIBIT HALL.**  
**Sit-Down Lunch**—you must have purchased a ticket with your registration. Lunch is served in the educational area of the event center. Your Badge indicates your lunch purchase on the back—this is your ticket.

12:50 PM - 1:50 PM

- **OBSTETRIC CARE FOR EMS**  
— SUZANNE BELLINGER - DNP, RNC-OB, C-EFM  
[MEDICAL] EMS/1.0 + N/1.0
- **NEONATAL RESUSCITATION MADE EASY**  
— LUCAS GOODIN - AICP, CCP, NRP  
[MEDICAL] EMS/1.0 + N/1.0
- **ALL SHOOK UP — SEIZURES**  
— DEB VON SEGGERN-JOHNSON - NRP, EMSI  
[MEDICAL] EMS/1.0 + N/1.0
- **STROKE, WHICH STROKE SCALE?** — DYLAN NEWSOM  
[MEDICAL] EMS/1.0 + N/1.0

2:00 PM - 3:00 PM

- **"CATH-LAB, TABLE FOR ONE": THE IMPORTANCE OF BEING GOOD AT BLS 12 LEAD**  
— JAMIE TEMPLE - BA, NRP, CCP  
[CARDIO] EMS/1.0 + N/1.0
  - **MOMMY HEAD REALLY HURTS**  
— DEB VON SEGGERN-JOHNSON - NRP, EMSI  
[TRAUMA] EMS/1.0 + N/1.0
  - **THE ISICS PLATFORM: HISTORY, STRUCTURE, HOW AND WHEN TO USE**  
— HALEY NICHOLS - STATEWIDE INTEROPERABILITY COORDINATOR [OPERATIONS] EMS/1.0 + N/1.0
  - **COMBATING THE HIDDEN DANGERS OF SHOCK IN TRAUMA** — AJ HEIGHTMAN - MPA, EMT-P [TRAUMA] EMS/1.0 + N/1.0
- ★ **SPONSORED BY IOWA ASSOCIATION OF AIR MEDICAL SERVICES**

3:00 PM - 3:45 PM

- **BREAK IN THE EXHIBIT HALL** — **HYVEE HALL C**  
**LAST Give-Away Drawings** and Refreshments and a treat will be served in the exhibit hall for this break.
- **LAST CHANCE TO DROP OFF YOUR RAFFLE TICKET**  
"DROP OFF YOUR RAFFLE ENTRY CARDS IN THE RAFFLE BAG AT THE IEMSA BOOTH #65 IN THE EXHIBIT HALL."

3:45 PM - 5:00 PM — KEYNOTE SESSION - BALLROOM

**FIELD AMPUTATIONS**

[TRAUMA] EMS/1.5 + N/1.0 — AZEEMUDDIN AHMED MD

8:00 PM - 11:30 PM —

★ **JOHNNY HOLM BAND — IS BACK! IT'S A DANCE PARTY** ★

— HELD IN THE EDUCATIONAL HALL (GROUND LEVEL)

AT THE IOWA EVENT CENTER LIVE MUSIC IS BACK AND SO IS

"THE JOHNNY HOLM BAND"— SPONSORED BY **Air Methods**.

**You earned it—a night of fun and relaxation.** This event is FREE to all registered conference attendees.

**PLEASE JOIN US FOR** fun, dancing and more. Registered attendees admission is included.

SPONSORED BY

**Air Methods®**  
DEFENDERS OF TOMORROW™



# SATURDAY NOVEMBER 11, 2023 SCHEDULE AT-A-GLANCE PLANNER

Approved EMS CE's and Nursing CH's are designated with the Core Topic and "EMS" and/or "N"

## 7:15 AM REGISTRATION OPENS

**7:45-8:45 AM — HONORING OUR OWN CEREMONY** : Please join us in honoring those no longer with us at this moving ceremony. Upstairs in the Ballroom—Level 3. This ceremony starts promptly at 7:45am. Doors will be closed once the ceremony starts.

## 8:55 AM - 9:55 AM — KEYNOTE SESSION BALLROOM - SPONSORED BY MERCY ONE DES MOINES

**THE MENDON AMTRAK CRASH - MCI LESSONS FOR THE RURAL CLINICIAN** [OPERATIONS] EMS/1.0 N/NO CH's—JOSHUA STILLEY, MD

## 9:55 AM - 10:55 PM

- **I AM FEELING REALLY - REALLY STRANGE**  
—DEB VON SEGGERN-JOHNSON - NRP, EMSI  
[MEDICAL] EMS/1.0 + N/1.0
- **THE MEDICALLY COMPLEX CHILD**  
—ERIK ADAIR, DO, FAAP - DO, FAAP  
[MEDICAL] EMS/1.0 + N/1.0
- **MOBILE INTEGRATED HEALTH/COMMUNITY PARAMEDICINE: WHY "YOU CALL, WE HAUL, THAT'S ALL" IS SO 1970'S...**  
— THOMAS DEAN STRIEGEL - DO, FACEP, FAAEM  
[OPERATIONS] EMS/1.0 + N/1.0
- **TOXICOLOGY: COMMON DRUG OVERDOSES**  
—HOLLY RANDLEMAN - PHARM D  
[MEDICAL] EMS/1.0 + N/1.0

## 11:05 AM - 12:05 PM

- **MENTAL HEALTH JOURNEY FROM A PATIENT'S PERSPECTIVE**  
— LUCAS GOODIN - NRP, ED, IST  
[MEDICAL] EMS/1.0 + N/1.0
- **ALL THAT WHEEZES**  
—ERIK ADAIR, DO, FAAP - DO, FAAP  
[ARV] EMS/1.0 + N/1.0
- **THE INCREDIBLE HULK!**  
—DEB VON SEGGERN-JOHNSON - NRP, EMSI  
[MEDICAL] EMS/1.0 + N/1.0
- **WATER RELATED INJURIES**  
—JOSHUA STILLEY, MD  
[TRAUMA] EMS/1.0 + N/1.0

## 12:05 PM - 1:05 PM (NEW! NO EXHIBIT HALL HOURS)

**IEMSA AWARDS CEREMONY LUNCH** -you must have purchased a ticket with your registration. Lunch is served in the educational area of the event center. Your Badge indicates your lunch purchase on the back—this is your ticket. **ATTENDEES Line-up on the far ends of the lunch hall. The center line is reserved for honorees and their guest.**

- **Lunch is also available at the FOOD VENDORS** (BBQ and Mexican Concession Stand) IN HYVEE HALL-C

## 1:05 PM - 2:20 PM

- **ANAPHYLAXIS!**  
—KYLE BEALE-MCDONALD - NRP CCP  
[MEDICAL] EMS/1.5 + N/1.0
- **PEDIATRIC CARDIAC ARREST**  
—BECCI MEREDITH - MSN, RN, CCRN, C-NPT  
[CARDIO] EMS/1.5 + N/1.0
- **IMPROVING YOUR PUBLIC IMAGE**  
— AJ HEIGHTMAN - MPA, EMT-P  
★ **SPONSORED BY IOWA ASSOCIATION OF AIR MEDICAL SERVICES**  
EMS/NO CE's + N/NO CH's
- **TRAUMA TACTICS**  
—LUCAS GOODIN - AICP, CCP, NRP  
[TRAUMA] EMS/1.5 + N/1.0

## 2:30 PM - 3:45 PM

- **BAM! BASIC AIRWAY MANAGEMENT**  
—KATIE DUMERMUTH - B.A., NREMT-PM, CCP  
[ARV] EMS/1.5 + N/1.0
- **CHILD ABUSE** —KRISTEN FOSTER - BSN, RN, CCRN  
[TRAUMA] EMS/1.5 + N/1.0
- **STEP AWAY FROM THE LIGHT**  
—JAMIE TEMPLE - BA, NPR, CCP  
[CARDIO] EMS/1.5 + N/1.0
- **TOXICOLOGY** —KYLE BEALE-MCDONALD - NRP CCP  
[MEDICAL] EMS/1.5 + N/1.0

## 4:00 PM - 5:00 PM — KEYNOTE SESSION BALLROOM - SPONSORED BY THE IOWA ASSOCIATION OF AIR MEDICAL SERVICES

**CHALLENGING YOUR CLINICAL BOUNDARIES** [MEDICAL] EMS/1.0 + N/1.0— AJ HEIGHTMAN - MPA, EMT-P

**CANCELLATION of SPEAKERS, SCHEDULE CHANGES POLICY:** The IEMSA Conference committee reserves the right to cancel or change any session or special event that does not meet minimum requirements, or to change a speaker as necessary. Final CE designations are subject to change and will be final as printed in the on-site Schedule-at-a-Glance.

**IEMSA AFFILIATE MEMBERS — A FREE SEAT IS WAITING FOR YOU** at the THURSDAY, NOVEMBER 9<sup>TH</sup>  
**Pre-Conference Leadership/Management Workshop Track** — IEMSA Annual Conference on November 9th— just register for one AM and one PM workshop designated with a (\*) Leadership/Management Track and use code "AFF-Leader23" at check-out when you register.





# 2023 : 33<sup>RD</sup> ANNUAL IEMSA CONFERENCE REGISTRATION

REGISTER BEFORE OCTOBER 31<sup>ST</sup> TO AVOID A **\$50 LATE REGISTRATION FEE!**

FIRST NAME \_\_\_\_\_ LAST NAME: \_\_\_\_\_

ADDRESS \_\_\_\_\_

CITY/STATE/ZIP \_\_\_\_\_

LAST 4-DIGITS OF SS# \_\_\_\_\_ DATE OF BIRTH (for CE Purposes): \_\_\_\_\_

PHONE \_\_\_\_\_ EMAIL \_\_\_\_\_

CERTIFICATION LEVEL \_\_\_\_\_ CERT/LICENSE # \_\_\_\_\_

## IEMSA INDIVIDUAL MEMBERSHIP: SAVE UP TO \$90

[SIGN-UP OR RENEW NOW & PAY MEMBER PRICES TODAY!]

\$ \_\_\_\_\_ ☐ NEW \$30/YR ☐ RENEW: \$30/YR

### THURSDAY : PRE-CONFERENCE WORKSHOP REGISTRATION

\$ \_\_\_\_\_ FULL DAY **SKILLS RODEO : HANDS-ON SKILLS CHALLENGE**

(OPERATIONS EMS/8.0 + N/7.5) LIMITED TO 25 ATTENDEES.

**\$120 MEMBER / \$160 NON-MEMBER**

\$ \_\_\_\_\_ FULL DAY **CRITICAL CARE WORKSHOP**

[EMS/4.0 ARV, 2.0 CARDIO, 1.0 MEDICAL] [N/3.0 ARV, 2.0 CARDIO, 1.0 MEDICAL]

**\$120 MEMBER / \$160 NON-MEMBER**

\$ FREE FULL DAY **HONOR GUARD CLINIC**

[NO CES / NO CHS]

**\$0 MEMBER / \$0 NON-MEMBER**

\$ \_\_\_\_\_ 1/2 DAY : PM **"A LITTLE BIT OF THIS + THAT" WORKSHOP**

[EMS + N/1.0 CARDIO, EMS + N/1.0 MEDICAL, EMS/1.0 OPERATIONS]

**\$60 MEMBER\* / \$90 NON-MEMBER**

**\* IEMSA AFFILIATE MEMBERS: 1-PERSON** —May attend the (\*) BELOW Leadership/Management Pre-Conference Workshops. (1) AM AND (1) PM sessions at no charge —Membership status will be verified. Indicate "FREE" OR ONLINE APPLY PROMO CODE: AFF-Leader23

\$ \_\_\_\_\_ 1/2 DAY : AM **\* FIRST RESPONDER MENTAL HEALTH**

[MEDICAL] EMS/3.5 + N/3.5

**\$60 MEMBER\* / \$90 NON-MEMBER**

\$ \_\_\_\_\_ 1/2 DAY : AM **\* INTRO/+REFRESHER SERVICE/MED DIR. WORKSHOP**

LEADERSHIP/MANAGEMENT PRE-CONFERENCE [OPERATIONS] EMS/3.5

**\$60 MEMBER\* / \$90 NON-MEMBER**

\$ \_\_\_\_\_ 1/2 DAY : PM **\* REFRESHER SERVICE/MEDICAL DIR. WORKSHOP**

LEADERSHIP/MANAGEMENT PRE-CONFERENCE [OPERATIONS] EMS/3.5

**\$60 MEMBER\* / \$90 NON-MEMBER**

\$ \_\_\_\_\_ 1/2 DAY : PM **\* EMERGENCY RESPONSE TO COMPLEX OUTDOOR INCIDENTS & HUNTING EMERGENCIES WORKSHOP**

[4 MEDICAL, TRAUMA, OPERATIONS] EMS/3.5 + N/3.5

**\$60 MEMBER\* / \$90 NON-MEMBER**

### 2-DAY : FRIDAY & SATURDAY CONFERENCE REGISTRATION

\$ \_\_\_\_\_ **\$220 MEMBER / \$290 NON-MEMBER**

\$ \_\_\_\_\_ **\$30 FRIDAY + SATURDAY - 2-DAY LUNCH PASS**

### 1-DAY : FRIDAY REGISTRATION

\$ \_\_\_\_\_ **\$165 MEMBER / \$240 NON-MEMBER**

\$ \_\_\_\_\_ **\$15 FRIDAY ONLY 1-DAY LUNCH - PASS**

### 1-DAY : SATURDAY REGISTRATION

\$ \_\_\_\_\_ **\$165 MEMBER / \$240 NON-MEMBER**

\$ \_\_\_\_\_ **\$15 SATURDAY ONLY 1-DAY LUNCH - PASS**

### LATE FEES:

\$ \_\_\_\_\_ **+ \$50 LATE REGISTRATION FEE**

**REGISTRATIONS RECEIVED AFTER 12 AM/OCTOBER 31<sup>ST</sup>**

\$ \_\_\_\_\_ **TOTAL REGISTRATION FEES**

**REGISTER BEFORE  
OCTOBER 31<sup>ST</sup>  
& AVOID A \$50 LATE FEE**

**ALL REGISTRANTS  
WILL RECEIVE  
AN IEMSA  
GIFT ITEM!**

### 3-WAYS TO REGISTER:

> **ONLINE BY CREDIT CARD:** Go to **www.iemsa.net/conference**—click on "Register Now", complete the online form, make payment securely by credit card.

> **COMPLETE THIS REGISTRATION FORM & MAIL W/PAYMENT** to confirm your registration. Make checks payable to IEMSA and mail to: 5550 Wild Rose Lane, Ste. 400, West Des Moines, IA 50266.

> **COMPLETE THIS FORM AND FAX** This method is **only for credit card payment registrations**. Fax to : 877-478-0926.

**REFUND POLICY:** Refunds, less a \$50 processing fee, will be made for cancellations made prior to October 15<sup>th</sup>. No refunds made after Oct 31<sup>st</sup>.

**REGISTRATION DEADLINE:** Register prior to **October 31<sup>st</sup>** to ensure entrance to the conference. Registrations received after this date & on-site registrations may be limited. IEMSA will not invoice services for payment. PO's not accepted form of payment.

### SPEAKER/SPECIAL EVENT CANCELLATION POLICY:

The IEMSA Conference committee reserves the right to cancel or change any session or special event that does not meet minimum requirements, or to change a speaker as necessary. Final CE designations are subject to change and will be final as printed in the on-site Schedule-at-a-Glance.

### CREDIT CARD PAYMENT:

CREDIT CARD NUMBER \_\_\_\_\_

EXPIRATION DATE \_\_\_\_\_ SECURITY CODE \_\_\_\_\_

CARD HOLDER NAME \_\_\_\_\_

ADDRESS \_\_\_\_\_

CITY/STATE/ZIP \_\_\_\_\_

AUTHORIZED SIGNATURE \_\_\_\_\_

[ THANK YOU ]

# YOU ARE THERE FOR OTHERS PCC IS HERE FOR YOU

No matter what size service you have, our staff continues to provide the highest level of service to ensure your success for years to come. PCC is dedicated to providing the highest quality coding, billing and account management services for a low cost to Ambulance Providers.

PCC has assembled a dedicated team of billing and collection professionals from the ambulance, fire, and medical fields to provide a dependable service that far exceeds our competitors. Our expertise, commitment, and processes are proven to be at the forefront in our industry. It is said that, "PCC is the only service that we trust" for complete and accurate Fire & EMS billing across the Midwest Region.



**PCC**  
AMBULANCE BILLING SERVICE

Contact us to find out how to  
**INCREASE YOUR REVENUE UP TO 35%**  
over your current in-house biller.

CALL 877-882-9911 OR VISIT [PCCFORME.COM](http://PCCFORME.COM)



**IEMSA**

Iowa Emergency Medical Services Association

5550 WILD ROSE LANE, STE. 400  
WEST DES MOINES, IA 50266

NON-PROFIT  
U.S. POSTAGE  
PAID  
DES MOINES, IA  
PERMIT # 5481

**M+ MERCYONE<sup>SM</sup>**

# Critical care in critical moments

When there's an emergency, know that our experts are just minutes away. With just one call, MercyOne's full circle of care is activated to ensure rapid access to the right level of care in the right location. From the initial outreach, expert, convenient, coordinated and personalized care is our commitment.



**MercyOne Air Med**  
Des Moines | Knoxville  
Mason City | Sioux City

1-800-247-1911  
**MercyOne.org/AirMed**